

Trustees' Annual Report

2024

Incorporating

- Impact of Activities
- Financial Review, Statements and Notes to the Accounts
- External Links and Partnerships



INSTITUTE OF
**MATHEMATICS &
ITS APPLICATIONS**

Contents

About the Institute of Mathematics And Its Applications	3
President's Foreword	5
Introduction – 2024 Report.....	7
PART ONE: Impact of Activities	
60 Years Supporting Mathematics And Its Applications	9
Education And Outreach	11
Grants And Case Study.....	18
Knowledge And Learned Society.....	20
Communications And Community Engagement.....	26
Reaching And Supporting Our Community	34
Equity, Diversity And Inclusion in Mathematics	37
Professional Affairs And Industry.....	38
Recognition And Professional Standards.....	40
Looking Ahead – 2025.....	44
PART TWO: Finance, Governance And Risk	
Finance, Governance, Risk And Financial Statements.....	46
Finance And Governance	47
Financial Review 2024.....	51
Independent Auditor's Report	54
Financial Statements And Accounting Policies 2024	61
PART THREE: External Links and Partnerships	
External Links And Partnerships	71
Glossary	75

About the Institute of Mathematics And Its Applications

This is the Annual Report of the Trustees of 'The Institute of Mathematics and its Applications' (IMA) for the year 2024. The Institute is governed according to a Royal Charter and Byelaws granted in 1990 and revised in 1997, 1999, 2002, 2008 and 2015. The governance and control of the Institute is vested in its Council (Council Members are also the Trustees). The IMA is a charity for public benefit and our charity registration number is 1017777. The Companies House registration number is RC000714.

The Royal Charter sets the IMA's Object(ive)s as:

- to advance mathematics and its applications in all areas including commerce, engineering, finance, health, industry, scientific and other academic disciplines and the public sector and to promote and foster research and other enquiries directed to the advancement, teaching and application of mathematics for the public benefit;
- to seek to establish and maintain high standards of professional conduct for Corporate Members;
- to seek to promote, encourage and guide in the development of education and training in all matters relevant to the advancement of mathematics and its applications for members and all other persons who are engaged in or likely to be engaged in mathematics or its applications.

Our activities in support of our Mission are set out within the IMA Strategy 2023-2028 approved by Council in November 2023, following a consultation period across our community in 2022-3. The 2023-28 plan is mapped across three broad strategic priority areas:

1. Advancing the Mathematics Profession And Achieving our Mission

The IMA will play a major role in advancing mathematics and its applications and maintaining high standards of professional conduct. We will promote and guide education and training standards and support activities to attract and retain today's and tomorrow's mathematical scientists. We will develop our EDI strategy to create an inclusive culture within the IMA and across the mathematics and its applications community.

2. Securing a Sustainable IMA Future

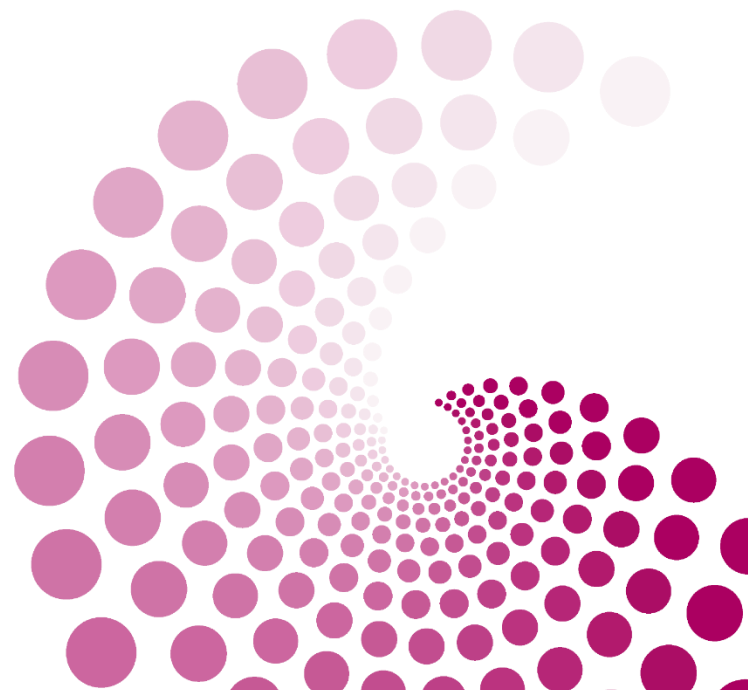
We will modernise the governance model and infrastructure which underpin our services to the mathematics community to ensure they are fit for the future. We will monitor existing, and create new, revenue streams and encourage a collaborative working culture. We will develop policies around environmental sustainability and social inclusivity while ensuring we have the right digital tools and systems to deliver our services safely and securely. Our activities will ensure the IMA remains a natural home for all those interested in mathematics and its applications, providing both local support through the branches, and targeted expertise through mentoring and special interest groups.

3. Showcase and Develop Mathematics for Societal Challenges

The IMA will foster and facilitate debate, discussion and learned output on key topics which affect society and the mathematical sciences community. This includes thought leadership and knowledge sharing on grand challenges where mathematical sciences will play a major role in shaping solutions, such as Climate Change, Artificial Intelligence and Disease Modelling. We will convene Special Interest Groups to develop these activities, building on our successful conference programme, journals and publications, and through new engagement opportunities including training, workshops, podcasts and digital content.

Examples of how we deliver our strategic aims include:

- Providing the Chartered Mathematician and Chartered Mathematics Teacher designations and promoting professional competence and CPD for registrants.
- Increasing local engagement through the branches, and targeted expertise through the introduction of peer-based mentoring.
- Creating new opportunities for public understanding through lectures, conferences, workshops, seminars, podcasts, videos and events.
- Demonstrating the ability of mathematics and mathematicians to support decision making, business and public policy.
- Harnessing and expanding our links with universities, research institutes and mathematical organisations in UK and overseas, providing opportunities to share good practice, deliver joint events and enhance reciprocal agreements.
- Inspiring the next generation through targeted activities and events which robustly challenge maths stereotypes and share the experiences of our members with new audiences.



President's Foreword

2024 was a landmark year for the IMA and I was delighted to be part of it. We celebrated three key milestones in our history: our 60th Anniversary, the 100th birthday of our first President, Sir James Lighthill FRS, and the 20th Anniversary of our Early Career Mathematicians Group. Huge credit must go to the Organising Committee and the staff of the IMA who did an amazing job arranging and running the celebration event in London on 16 October, a fantastic day uniting members and partners from the IMA's past, present and future.

The IMA has made enormous progress in the delivery of our [2023 to 2028 Strategy](#). Our first strategic priority area is the *advancement of the mathematics profession and achieving our mission*. I am very proud to support the launch of the IMA's EDI Strategy, which shows our commitment to creating a diverse and inclusive mathematics community in which all can thrive. I would like to thank Dr Howard Houghton CMath FIMA, the IMA's EDI Champion and Chair of the EDI Committee, in all his efforts in putting this strategy together.

We also committed to our members that we would focus on *securing a sustainable IMA future*. [The IMA Foundation](#) was launched as part of our anniversary, underlining our strategic objective to *create legacy*. The Foundation aims to attract funding from donors large and small to provide support to our community and continue to meet our charitable objectives. Meanwhile, following the launch of the IMA [Exponential Mentoring Scheme](#) which seeks to match mentors with mentees across our membership, the programme has exceeded our expectations in terms of member engagement. I would encourage you to check out our YouTube channel to watch an [interview](#) with our VP Communications Nathan Turner CMath FIMA, mentor Dr Dan Tilley CMath FIMA and mentee Adrian Bell AMIMA, launched as part of National Mentoring Day.

Finally, our Research Committee has commenced the development of a series of special interest groups (SIGs) *to showcase and develop mathematics for societal changes*. The Climate, Environment and Sustainability SIG and the Mathematics of Artificial Intelligence SIG are the furthest advanced, with plans to kick start SIGs on Maths Education and Defence and Security in 2025. Keep an eye out for the calls for membership in *Mathematics Today*, our newsletter and social media.

2025 promises to be as busy as 2024, as members and the professional staff build on their work to date. The *development of our digital tools and infrastructure* is key to this and work has already started on the IMA's IT Roadmap. This includes identifying a new Client Relationship Management system and the member portal *myIMA* for which the review process is already underway. The IMA staff are also looking forward to moving to new premises in early 2025. Whilst we will be sad to say goodbye to Catherine Richards House, the new offices will provide staff with a more sustainable, collaborative working environment and means we can invest more in our services to the mathematics community and charitable activities. Work will also continue to *create a new modern look and feel* to our digital identity, including our e-newsletters and *Mathematics Today*.

We are also looking forward to taking a leading role in the *Levelling Up: Mathematics* education programme, including the roll-out of a new Engineering pathway to support A Level students hoping to go on to engineering study or apprenticeships.

I would like to thank the members, officers, volunteers and staff of the IMA for their truly amazing achievements. Particularly our Executive Director, Rosalind Azouzi who has been a driving force behind this effort, and whose boundless enthusiasm and energy has been key to our achievements.

If you would like to get more involved in the IMA as we move through this exciting transformation, please contact the team at post@ima.org.uk.

Finally, I wish you a happy and healthy 2025.

Professor Hannah Fry HonFREng FIMA



Introduction – 2024 Report

The IMA's Trustees' Report 2024 merges our Annual Report, Trustees' Report and Financial Statements into one reference document.

- **Part One** focuses on direct impact of the IMA's activities in support of mathematics and our public benefit objectives.
- **Part Two** provides Finance, Governance and Risk information, the Financial Review 2024, the 2024 Financial Statements and Notes to the Accounts.
- **Part Three** summarises our external links and partnerships with other bodies in support of our Mission.

During our 60th anniversary celebrations over 2024, we announced our intention to start fundraising to develop an IMA Foundation, a new designated fund to support grants, awards and educational projects. We hope this will enable us to increase our community engagement over time, all the while easing pressure on our operational costs, maintaining our professional services and investing in digital technologies to transform our delivery model.

Following the launch of the IMA 2023-2028 Strategy, we began project delivery in earnest. A major development was the launch of a new, peer-peer mentoring platform, *IMA Exponential*, in early 2024 which has seen fantastic take-up across our membership. We also continued to look for opportunities to increase engagement through our events including filming lectures where possible to include on our YouTube channel. We added another new event to our calendar, a talk from the 2024 David Youdan Medal winner, Professor Alan Champneys CMath FIMA, in November. Meanwhile, we were delighted to establish a new conference on mathematics, Artificial Intelligence and Machine Learning, held in September in Birmingham.

Another notable milestone was the 20th year of our dedicated Early Career Mathematicians group. We celebrated with a special 'Evening with the ECMs' in March, again recording the talks. The ECMs organised a dedicated panel session at our major celebration event in October, focussing on professional development and career progression.

Our outreach activities reached even greater numbers of young people this year. Staff and volunteers again returned to the Big Bang at the NEC, and RAF Museums' Forces in STEM events in London and Cosford. For the first time we took part in the Royal International Air Tattoo STEMZone thanks to the generosity of the IET and Dstl, a fitting tribute to our first President, Sir James Lighthill, pioneer of aeroacoustics. The University of Greenwich hosted the IMA Festival of Mathematics on our behalf, with events at their London and Medway campuses reaching many local school children. Meanwhile we helped facilitate an Engineering pathway for the Levelling Up: Mathematics programme, which aims to help provide tuition for Maths A Level students from underserved backgrounds.

Another major project has been our office relocation plans, accepting an offer for Catherine Richards House in October and an extensive search to secure brighter, modern and more collaborative workspace for the staff team nearby in Southend, with plans to move in early 2025.

As always, our efforts are only possible with the tireless dedication and support of our volunteers and hard-working staff. Our gratitude to all our volunteers and supporters over 2024.

Rosalind Azouzi | Executive Director

PART ONE:

Impact of IMA Activities

60 Years Supporting Mathematics and Its Applications

23 April 2024 marked a major milestone in the IMA's history: our 60th anniversary. We organised a special Celebration Event on 16 October at Savoy Place in London, themed *Mark our past, shape the future*. Here, our President, Professor Hannah Fry, welcomed over 150 distinguished guests, including Past Presidents, Honorary Fellows, and senior representatives from the mathematics community. The next generation of mathematicians also joined us to celebrate the ECMs' 20th anniversary, organising special panel sessions on career progression and professional development, embodying our commitment to inspire and develop future leaders.

Another highlight of the day was a special presentation to the Institute's second President, Professor Sir Bryan Thwaites Hon FIMA, in honour of his 100th birthday in 2023, who attended in person, while our youngest guest was 15, a true indication of the IMA's relevance to generations past, present and future.

We also took this opportunity to announce our intention to establish a new IMA Foundation which aims to raise funds to provide further to support the mathematics community - such as through new grants and awards and/or widening our education, outreach and careers projects - as a legacy of our 60th year.



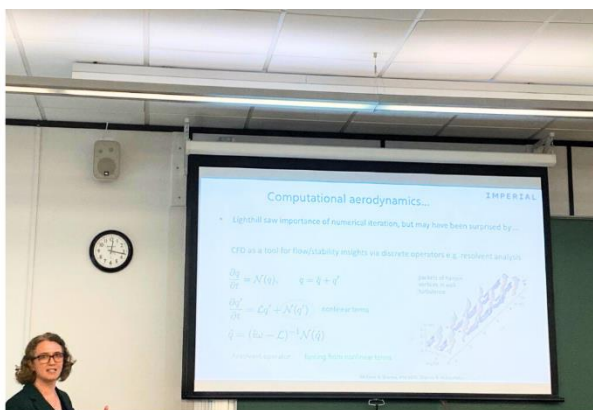
Past presidents, speakers and guests at the IMA 60th Anniversary event in October 2024

Lighthill100 Meeting

The IMA was also delighted to support a special Lighthill100 conference organised by the University of Manchester in September. This event comprised of talks from former friends, students and colleagues of the first IMA President Sir James Lighthill, who was born in 1924, reflecting on his significant contributions to mathematical research and development along with artefacts, personal anecdotes and video footage. This reminded us all of his inimitable teaching style and a pioneer of fields such as Aeroacoustics, Biological Fluid Mechanics, Geophysical Fluid Mechanics, Aerodynamics and Waves.

Early Career Mathematicians' 20th Anniversary

The Early Career Mathematicians (ECM) committee also celebrated its 20th anniversary in 2024, underscoring two decades of dedicated activities to support, develop and retain the next generation of professionals working in mathematical fields. In March we held a special '*Evening with the IMA ECM Community*' in London to showcase their work and opportunities to get involved. The presentations were also filmed and are now available to view on the IMA Youtube channel.



L: ECMs convene for 20th Anniversary celebrations, R: Prof Aimee Morgans delivers her talk for the Lighthill100 event

Mathematics Today Archive Project

We also delved into our rich archive of articles published in *Mathematics Today*, first published as the IMA Bulletin in 1965, to make a selection of interesting articles available online, chosen and introduced by IMA members and MT readers, who explain why they are important to them.

These nine articles continue to be relevant to today's mathematicians. They span 1971 to 2016 and include a broad range of topics, such as numerical analysis, education, animal flight, Stokes phenomenon, Rubik's cubes, the Enigma machine, Kalman filters and Bayesian statistics in the courtroom.

The selection is available on our website, and we hope to provide further access to archive materials in the future.



Education and Outreach

The IMA's education and outreach activities are led by the Honorary Secretary Education, with two committees covering secondary, tertiary and higher education, a dedicated Education Manager and one funded post. The IMA actively promotes the engagement of our members in mathematics education including work to share communications online and through our flagship publication *Mathematics Today*.

For instance:

- notification of the publication of key reports;
- invitations to participate in events and / or contribute to external initiatives;
- opportunity to provide feedback on specific issues;
- invitations to contribute to Institute responses to consultations;
- publication of the Institute's submissions to consultation exercises.

The IMA also provides direct support to a number of programmes to support mathematics education, teaching and learning across the UK and for all levels of education. We attend major STEM events to showcase mathematics 'in action' to young people, teachers, parents and other key influencers, aiming to overturn stereotypes surrounding mathematics and signpost visitors to further resources such as [MathsCareers.org](https://www.mathscareers.org).

The IMA also delivers the Mathematics Teacher Training Scholarships, on behalf of the Department for Education (DfE), working with partners including the London Mathematical Society (LMS), Royal Statistical Society (RSS), The Mathematical Association (MA), STEM Learning and MEI.

During 2024, our contribution to mathematics education was led by Professor Catherine Hobbs CMath FIMA (Honorary Secretary with responsibility for Education). Professor Noel-Ann Bradshaw CMath FIMA (Chair, Higher Education Committee), Dr Gordon Laing CMath CMathTeach FIMA (Chair, Schools & Further Education Committee) and Vanessa Thorogood (Education Manager) together with all our education committee members. Professor Nigel Steele CMath Hon FIMA continued to support the IMA in the role of Mathematics Teacher Training Scholarships Advisor.

Throughout 2024, we actively engaged in key educational discussions and consultations to support the development of mathematics education in the UK.

- Royal Society Mathematical Futures Programme. We provided a positive response to the discussion paper consultation, contributing to the ongoing dialogue on the future of mathematical education.
- A World-Class Education System: The Advanced British Standard Consultation. In collaboration with the LMS, we submitted a joint response, ensuring a strong mathematical perspective was represented.
- Proposed Changes to GCSE Assessments. We responded to the consultation on modifications to the assessment of mathematics for 2025–2027.
- Curriculum and Assessment Review. The government is reviewing England's national curriculum and assessment system to ensure effectiveness and relevance. We submitted a response to the call for evidence, contributing our expertise to shape future improvements.



- Strategy Review. Our Education Committees continue to align educational initiatives with the objectives set out in our Royal Charter, ensuring a strategic and impactful approach to mathematics education.

Both education committees continue to actively support key IMA education initiatives, including the *Mathematics Teacher Training Scholarships* and *Levelling Up: Maths*.

The IMA's Education Grants were paused in 2024 to allow for a strategic review by the Grants and Prizes review group. Both committees provided input on ensuring a more impactful approach, emphasising the need for measurable outcomes, an opportunity to collaborate with other organisations, have curriculum relevance, and sustainability. Moving forward, a shift towards targeted grants rather than reactive funding may better support the IMA's aims and align with the IMA Foundation to fund a broader range of activities.

Higher Education Committee (HEC)

HEC welcomed Professor Loyal Hakim FIMA (University of Exeter) and Dr Ioanna Papatsouma FIMA (Imperial) as new committee members.

In collaboration with the LMS, the IMA conducted a survey on teaching-focused career pathways in UK mathematics departments. With input from over half the departments/sub-departments of mathematics in UK universities, via HoDoMS, the report found that approximately 14% of academics follow this route. More details are available in the *Teaching-Focused Academic Staff Report*.

HEC continues to actively support membership development activities.

Course Accreditation

The Institute's Course Accreditation scheme accredits university degree courses from which all its graduates will meet the educational requirements for the CMath designation. A total of 70 universities currently have degrees accredited by the Institute. A list of accredited degree courses can be found on our [website](#).

In 2024, the *IMA Course Accreditation Review Group*, established by HEC, started a comprehensive review of the accreditation process. Following wide consultation, proposed revisions were approved in principle by Council, with draft documentation now under review by HEC.

Key enhancements to the Course Accreditation Scheme include:

- Introducing a new 'Recognition for Membership of the IMA' category for degrees with 50–66% mathematical content, broadening eligibility for IMA membership.
- Providing structured feedback to departments following accreditation visits.
- Highlighting good practice case studies

HE Teaching and Learning Series

The *Higher Education Teaching and Learning Series*, provides an opportunity for higher education mathematical sciences departments to request supporting funds for facilitating a teaching and learning related workshop.

During 2024, the following workshops from the 2023/24 HE Teaching and Learning Workshop Series took place:

- University of Manchester: *Mathematics Education that Better Develops Problem-Solving Skills*
- UEA: *Augmenting Chalk and Talk: Helping Early Career Mathematicians to Diversify their Teaching Repertoire*
- University of Greenwich: *Designing assessment to promote students' wellbeing*
- University of Glasgow: *Rethinking Assessment in The Mathematical Sciences in Times of Generative AI*

Workshop reports are available on our website.

The sixth call for the Higher Education Teaching and Learning Series is due in January 2025, in conjunction with the RSS and LMS.

Induction Course for New Lecturers in the Mathematical Sciences

Around 40 attendees participated in this workshop which took place in September 2024 at the Isaac Newton Institute for Mathematical Sciences, Cambridge. Through a community initiative supported by the IMA, INI and HoDoMS, and endorsed by the RSS and the LMS, The Induction Course for New Lecturers in the Mathematical Sciences has been designed by the mathematics community so that it is ideally suited for anyone who is new to or has limited experience teaching mathematics or statistics within UK higher education.

IMA John Blake University Teaching Medal

This prestigious award honours excellence and innovation in higher education teaching and learning. Named in memory of Professor John Blake, the medal recognises those who have made a significant and lasting impact on the teaching of mathematical sciences at university level.

Nominations for the award of the 2025 IMA John Blake University Teaching Medal opened on 1 October 2024.



Schools and Further Education Committee (S&FE)

The S&FE Committee welcomed Dr Camilla Kerr AMIMA to the committee.

During 2024, the S&FE Committee noted a significant rise in students resitting GCSE maths in recent years, with a new government mandate requiring full-time resit students to study at least four hours of maths per week from September 2024 or the risk of schools and colleges losing funding. This policy is expected to create staffing shortages and timetabling challenges. Ofqual's review of reformed Functional Skills qualifications (FSQs) in English and Maths highlighted areas for improvement but found no need for major assessment changes. In Maths, awarding organisations must address issues identified in the FSQ review, with further research underway on effective problem-solving assessment.

The S&FE Committee continues to monitor the work of the Maths Hubs, which marked its 10th anniversary in 2024 and has impacted 4.7 million children. Teaching for mastery remains instrumental in supporting sustained student progression, particularly in primary schools. In secondary education, the Targeted Support programme continues, reinforced by new KS4 mastery PD materials. Maths Hubs have also extended their mastery specialist support into FE. With an increase in Core Maths funding, the Maths Hubs are collaborating with Advanced Mathematics Support Programme (AMSP) to support Core Maths teachers. Additionally, the Maths Hubs Designation has been extended to 2025, pending further government review.

Mathematics Teacher Training Scholarships

The IMA, working with LMS, MA, MEI, STEM Learning and RSS, delivered the twelfth year of the Mathematics Teacher Training Scholarships on behalf of the DfE. The overall aim of the Maths Scholarships is to improve the quality, and widen the pool, of applicants for secondary teacher training by attracting highly qualified graduates and career-changers who might not normally consider teaching as a career.

The 2023/24 year opened for applications in January 2024, with a target of awarding 270 Scholarships to those who commence secondary mathematics teacher training in the 2024/25 academic year. The number of applications was significantly up from the previous year; however, the number of awards was similar in comparison to the previous year.

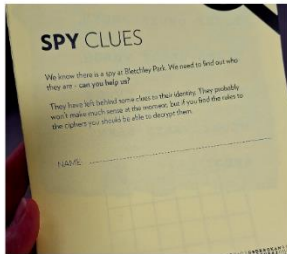
The IMA once again led the development of a dedicated CPD programme to this year's Maths Scholars, drawing on our network of mathematics education experts as follows:

- Maths Scholars Celebration Event 2023
 - *Teaching Mathematics Outside the Box* - Alison Kiddle (Maths Educator and Communicator)
 - *Ten Top tips for making the most of NRICH in your Classroom* - Dr Ems Lord FIMA (NRICH)
 - *Maths isn't the problem. We are* - Aidan Gollaglee (London South East Plus Maths Hub)
- Inspiring students with real-life contexts and Core Maths (webinar) - Elizabeth Hopker-Blunt (MEI)
- Encouraging participation in maths beyond GCSE (webinar)* - Rachel Beddoes (MEI)
- Bletchley Park Super Visit 2024
- Maths Scholars Resources Workshop 2024
 - *Applying Mathematics beyond the curriculum* - Michael Anderson (STEM Learning)
 - *Hands on Maths* - Dr Katie Chicot (MathsWorldUK)
 - *STEM Ambassador session* – STEM Ambassador
- Maths Scholars CPD Workshop 2024*
 - *Exploring the global heritage of mathematics* – Simon Clay (MEI)
 - *Teaching Statistics - How to Do Better Than Average* – Dr Craig Anderson (University of Glasgow)
 - *Recreating Islamic Geometric Patterns* - Samira Mian (Freelance Artist & Educator)

Members of the Maths Scholarships Alumni were also invited to the events in the list above marked with a *.

The thirteenth year (2024/25) of the Mathematics Teacher Training Scholarships was announced in October 2024 and applications opened in January 2025. DfE will offer a £31K tax-free bursary to successful applicants. Again, there are 270 Maths Scholarships available for individuals commencing secondary mathematics teacher training in the 2025/26 academic year.

Mathematics
Teacher
Training
Scholarships



Top images: Maths Scholars Celebration Event, Bottom images: Super visit to Bletchley Park

Levelling Up: Mathematics education programme

In 2024, The IMA continued its role as a partner in the *Levelling Up: Mathematics* programme, working together with the London Mathematical Society and the project founder, Tony Hill. The programme provides A Level Maths students who have little or no access to additional learning support, such as private tuition, with access to undergraduates from local university Maths departments who provide guidance and support, using dedicated materials to complement the curriculum, developed by LMS.

The IMA have been working in partnership with experts at Warwick, Bath and Bristol Universities to develop a series of new modules for 2024 - *Levelling Up: Mathematics for Engineering*. A small team of IMA members who are working in engineering fields and/or with expertise in teaching Maths for Engineering volunteered to help develop the materials.

This pathway is being delivered with the support of the Royal Academy of Engineering (RAEng) and is proving to be of great interest to both new and existing members of the Maths cohorts. This partnership will encourage and support university Engineering departments to deliver the programme, enhancing engineering education and broadening participation with three goals:

1. Raise awareness of engineering in STEM based job opportunities
2. Raise the maths capabilities of those interested in engineering careers
3. Help students appreciate the maths in practical engineering



At December 2024 there were 11 universities delivering the programme to students in under-served groups across the UK.

The IMA continues to support the *Levelling Up: Maths Black Heritage* associated project, backed by Past President Professor Nira Chamberlain OBE CMath CSci FIMA, to provide a programme specifically designed by and for students and tutors of black heritage. Other developments include regional hubs to run the programme in Scotland and Wales.

In late 2024, the IMA agreed to take on the lead partner role for the Mathematics and Maths for Engineering programmes from 2025.

Maths Enrichment

The IMA again took to the road in 2024 to exhibit at key outreach events across the UK with interactive maths activities and impartial information, advice and guidance on routes into mathematics to visitors, which included young people, teachers and parents.

The Big Bang Fair 2024

The Big Bang Fair took place from 19–21 June at The Birmingham NEC, where the IMA run its Maths in Action stand. This interactive space provided a fun, hands-on experience, highlighting the real-world applications of mathematics. The IMA Outreach team, along with volunteers Dr John Meeson FIMA, Tom Briggs AMIMA (Communications Committee), and university students,

engaged pupils, teachers, and parents from across the UK through a range of activities, including *Can You Beat the Cube?*, Galton Board, Soap Bubbles, Aerofoil and Bernoulli Blower. The stand successfully demonstrated the excitement and relevance of mathematics in everyday life.

IMA Festival of Mathematics and its Applications

The University of Greenwich hosted this year's *IMA Festival of Mathematics and Its Applications*, showcasing the impact of mathematics in industry, education, and the media. Highlights included talks by Professor Nira Chamberlain OBE CMath CSci FIMA, Dr Aoife Hunt MBE, and Bobby Seagull, as well as the IMA Presidential Address by Professor Hannah Fry HonFREng FIMA. The Festival also featured Greenwich Maths Time, offering hands-on activities for school students across both the Greenwich and Medway campuses.

The IMA Outreach Team also ran the popular *Can You Beat the Cube?* challenge at both Greenwich Maths Time events, engaging students with a hands-on mathematical activity.

Royal International Air Tattoo (RIAT)

The IMA partnered with DSTL to participate in the *Royal International Air Tattoo (RIAT) 2024*, held from 19 – 21 July, with a dedicated space on the IET stand in the TechnoZone. This was the Institute's inaugural STEM participation at an air show, and as many as 40,000 children were offered the chance to experience the TechnoZone exhibits over the weekend.

The collaboration with Dstl apprentices whose numeracy game, curated by the apprentices, made its public debut and proved incredibly popular alongside aerospace-themed mathematics activities which complemented those on offer from other volunteers from the IET. The engagement with children and their families was fantastic throughout the event, and the TechnoZone offered a fantastic opportunity to engage with like-minded STEM volunteers from other exhibitors.



IMA members Ed Rothead and Neil Harris of Dstl trying out the maths game at RIAT.

Forces in STEM

Forces in STEM is run by the RAF Museum, in partnership with the Royal Air Force Youth STEM team. The event brings together companies from across both aerospace and local industries to provide exciting hands-on activities for upper Key Stage 2 (Years 5 & 6) pupils.

The IMA attended this event at both their museum sites, RAF Museum London (April) and the RAF Museum Cosford (September) running the following activities: aerofoil, Bernoulli Blower and *Can you Beat the Cube?*

Event organisers praised the IMA stands for being consistently busy and engaging, with one London student sharing that the Bernoulli Blower was their favourite activity of the entire event.

Grants

The IMA provided grant funds in 2024 via the *Small Grants Scheme*. We also provided occasional support through our special Grants without Portfolio scheme for applications which do not meet the eligibility criteria for the above but demonstrate clear objectives which are aligned to those of the IMA.



We also provide administrative support on behalf of the QJMAM fund for Applied Mathematics which exists to support UK research in the broad area of applied mathematics and theoretical mechanics. The fund is administered by the Institute of Mathematics and its Applications, but decisions on the award of grants are made by a panel appointed by the Trustees, chaired by Professor Andrew Norris. Details of these awards can be found on our website.

Small Grants

The IMA's Small Grants Scheme is designed to be flexible, so that it can be used to facilitate any research activity within the scope of mathematics and its applications. Grants are available up to a value of £600 for individuals and up to £1,200 when enabling an event to take place. Applications are limited to IMA members only.

The budget for 2024 was £16,000.00. The Scheme received 55 applications during 2024. 21 requests were awarded in full, 23 were partial awards and 11 were declined. A list of 2024 grants made can be found on the IMA website.

Other IMA Grants 2024

One grant was made by the Executive Board from the IMA's Grants Without Portfolio (GWP) fund. This was to Dr Rehan Shah MIMA of Queen Mary University of London. The grant was in support of focus groups for empowering students through the co-creation of inclusive STEM curricula for mathematics courses. This project aims to design teaching toolkit materials that could be used by academic staff to embed and incorporate as part of the diversification of undergraduate mathematics-based modules across UK universities, following a wider dissemination of these resources from late 2024.

Grant Case Study

Making Diversity 'Count': empowering students through co-creation of inclusive STEM curricula



Project Leads: Dr Rehan Shah - Lecturer (Assistant Professor) in Mathematics and Engineering Education, Queen Mary University of London (QMUL); Dr Brigitte Stenhouse – Lecturer in History of Mathematics, The Open University (OU)

GWP funding was provided for a one-day focus group workshop led by Dr Shah and Dr Stenhouse at QMUL in November 2024 whose aim was to empower QMUL and OU undergraduate students through exposure to student co-created inclusive mathematics curricula resources for STEM disciplines.

The focus groups were motivated by the limited emphasis traditionally placed within university curricula on the historical and current contributions of diverse pioneering individuals from under-represented backgrounds within STEM disciplines. This consequently contributes to a stigma among students that studying mathematics is esoteric and inaccessible due to a lack of role models.

The workshop, featuring 10 QMUL and OU second and third-year undergraduates, consisted of students critiquing and providing their insights on co-created inclusive resources such as posters and biographies through written feedback questionnaires and audio-recorded focus group discussions. Key findings evident from the student discussions included:

- The dire need to introduce such material within lectures and professional STEM skills courses at university in a relevance-focused manner, not only through developed resources, but also through greater conversation
- The presentation of diversity within these materials should focus on highlighting both the achievements and the challenges faced by the individuals in a celebratory, yet realistic manner to enable more students to relate
- Students emphasised the importance of raising awareness about inclusivity, sexism and religious tolerance among their peers at university due to its importance in group dynamics and teamwork
- Engagement with such resources can be improved through formative (interactive quizzes and games) rather than summative assessments (exams, coursework) to ensure the topic continues remaining an 'ongoing discussion' rather than a 'one-time task'.

Following the overall success of the workshop and the positive feedback received from the students, who highlighted the need for having more engaging and therapeutic discussion of such pertinent issues at university, the team aims to complete the formal analysis of our findings and collate them for submission as a journal research paper. We will also iterate the toolkits created by both QMUL and the OU based on the feedback received and disseminate our materials to other UK universities and the wider mathematical community.

Dr. Rehan Shah | Queen Mary University of London

Knowledge and Learned Society

The IMA's learned activities include the work of our Research Committee which leads the Institute's efforts to support and recognise mathematics research, and our prestigious, peer-reviewed suite of scholarly publications which are overseen by the Journals Board of Management. This work is underpinned by our flagship publication, *Mathematics Today*, which provides members in-depth articles on applications of mathematics, as well as the latest news from the IMA and its members, led by Editor Rob Ashmore CMath CSci FIMA. The IMA also provides learned conferences, workshops and talks, steered by the Conference Committee and individual organising committees, providing fora for knowledge sharing, discussion and debate.

Research Committee

The Research Committee led the IMA's discussions with the research funding councils and policy makers and worked to promote the benefits of fundamental and applied mathematical research to the economy and society. It also oversees assessments of Small Grant applications.



The Research Committee met three times in 2024 to discuss their usual agenda, with particular focus on their delivery of certain strategic objectives. Throughout the year they maintained their commitment to representing the mathematical community; to follow are some of the 2024 highlights:

Vice President with responsibility for Learned Society

Dr Martine Barons CMath FIMA, Vice President, Learned Society commenced her final year as Chair of this Committee in 2024, and the process to identify her successor began at the start of the year. A role profile, terms of reference and call for nominations was published in *Mathematics Today* and on our website. This led to the announcement in the summer, that Dr Eduard Campillo-Funollet MIMA would take up the role on 1 January 2025.

Special Interest Groups

The new [IMA Strategy 2023-8](#) includes an intention to re-establish Special Interest Groups (SIGs) as a key part in delivering our objectives in Strategic Priority Area 3: "the importance of Mathematics in solving societal challenges." Dr Martine Barons' article in the August edition of *Mathematics Today* detailed the areas under consideration and invited members to register their interest in joining or leading one of the groups, and there was an overwhelming response.

The committee for Climate, Environment and Sustainability has been selected and the IMA/LMS joint meeting on Mathematics for the Environment (see below) saw its launch. Following 'Unlocking the Potential: The IMA AI/ML Congress 2024', held on 4 September in London, we have been working with members in industry and academia to formalise our Artificial Intelligence SIG, which is being led by the Chair of the event, Dr Anjulika Salhan CMath CSci FIMA.

LMS / IMA Joint Meeting 2024 - Mathematics for the Environment

This event took place on the 20 September 2024 and was hosted at De Morgan House by the LMS and via Zoom. The speakers were:

- Dr Rebecca Killick (Lancaster University);
- Vera Melinda Galfi (Vrije Universiteit Amsterdam);
- Professor Christina Cobbold (University of Glasgow);
- Professor Onno Bokhove (University of Leeds)

A full list of speakers and abstracts can be found [here](#).

As with previous events, it was well attended both in person and virtually, and guests were complimentary about the format of the event and the engagement of the attendees.

European Mathematical Society Council / ECM 2028 Bid

During 2024, the IMA and the LMS submitted a joint bid to host the July 2028 EMS Conference in London, This work was led by Professor Helen Wilson FIMA and Richard Thomas (co-chair of the Scientific Committee alongside Helen). The other city submitting a bid was Bologna. The incoming Vice President, with responsibility for Learned Society, Eduard Campillo-Funollet MIMA represented the IMA at the EMS Council meeting in Grenada, Spain, where sadly, the UK were not successful. The event will take place in Bologna. However, the committee intend to submit for a future bid.

IMA Hedy Lamarr Prize

Nominations opened for the Hedy Lamarr Prize for Knowledge Exchange in Mathematics on 1 October 2024. The winner will be announced following the June 2025 meeting of Council.

External nominations

The committee also provided nominations for external programme and scientific committee/boards led by the INI and ICIAM.

Journals

The IMA's eight academic journals are published by the Oxford University Press (OUP).



Two of these are traditional hybrid print journals:

- IMA Journal of Applied Mathematics
Editors: Professor Alan Champneys CMath FIMA, (Bristol), Professor Demetrios Papageorgiou FIMA, (Imperial); and Darren Crowdy FIMA (Imperial).
- IMA Journal of Numerical Analysis
Editors: Arieh Iserles FIMA, (Cambridge), Endre Süli FRS FIMA, (Oxford), Charles Elliott FIMA (Warwick) and Alexandre Ern, CERMICS, Ecole des Ponts (ENPC).

Five are online only hybrid journals:

- Teaching Mathematics and its Applications: an International Journal of the IMA
Editors: Professor Duncan Lawson MBE CMath FIMA, (Coventry); Professor Christopher Sangwin FIMA, (Edinburgh) and Dr Cathy Smith AMIMA (OU).
- IMA Journal of Mathematical Control and Information
Editors: Professor Christophe Priour FIMA (Grenoble), Professor Sarah Spurgeon OBE FEng CMath FIMA, (UCL) and Professor Dr Joachim Rudolph FIMA (Saarland University);
- Mathematical Medicine and Biology: A Journal of the IMA
Editors: Professor Oliver Jensen CMath FIMA, (Manchester); Professor John King CMath FIMA, (Nottingham), Professor James Keener CMath FIMA, (Utah) and Professor Bob Guy (University of California Davis);

- Information and Inference: A Journal of the IMA
Editors: Professor Robert Calderbank, (Duke); Professor David Donoho MIMA, (Stanford); Professor John Shawe-Taylor CMath FIMA, (UCL) and Professor Jared Tanner MIMA, (Oxford);
- IMA Journal of Management Mathematics
Editor: Professor Aris Syntetos FIMA (Cardiff).

One is an open access only online journal:

- Transactions of Mathematics and its Applications: A Journal of the IMA
Editor in Chief: Professor Dominic Vella FIMA (Oxford) and Professor Chris Budd OBE CMath FIMA (Bath)

The journals portfolio is overseen by the Journals Board of Management. Our thanks to the current Journals Board of Management Chair, Demetrios Papageorgiou, previous JBM chair Professor Iain Duff CMath CSci FIMA who stepped down in 2024 after two decades' service, our Journal Editors and Associate Editors, and Publishing Partner Martha Bailes, for steering the journals.

During 2024 the IMA Journal of Management Mathematics awarded its 2023 best paper prize to Xiaoshi Guo and Sarah M Ryan for *Portfolio rebalancing based on time series momentum and downside risk*.

Impact Factors (IF) for 2023 were released by Clarivate in June 2024:

Journal	2022	2023
IMAJNA	2.1	2.3
IMAMAT	1.2	1.4
IMAMMB	1.1	0.8
IMAMAN	1.7	1.9
IMAIAI	1.6	1.4
IMAMCI	1.5	1.6

There are still fluctuations in IF due to Clarivate changing the way the figure is calculated. It is hoped that this will stabilise with the release of the 2024 figures in 2025.

The growth of Open Access publishing continues to have an inevitable impact on the IMA journals. Open Access publishing is where an article is made immediately available to the public upon publication, as opposed to the traditional subscription model. The impact on journal revenue because of this change has been ameliorated by Oxford University Press negotiating 'Read and Publish' deals with libraries. These allow authors to utilise funding to publish their articles via Open Access. The most significant UK deal is with JISC, this covers many UK institutions. Various similar deals have been made with other groups worldwide. Traditional subscriptions also held up better than expected over 2023, positively impacting our 2024 revenue.

During 2024 work was completed to provide free online access to IMA members to our suite of journals. An article was published in *Mathematics Today* to raise awareness among authors of the Read and Publish funding that is available for them to publish work under an Open Access licence. This has allowed IMA research to be shared more widely among those who might not otherwise see it, for example, members in the industrial, health, and business sectors. Below are the top read / visited articles for 2024.

Top Read Journal Articles 2024

IMAJNA: [Accurately computing the log-sum-exp and softmax functions](#) | IMA Journal of Numerical Analysis | Oxford Academic (2,020)

IMAMAT: [Can physics-informed neural networks beat the finite element method?](#) | IMA Journal of Applied Mathematics | Oxford Academic (6,169 views)

IMAMAN: [Last mile logistics: Research trends and needs](#) | IMA Journal of Management Mathematics | Oxford Academic (4,497)

IMAMCI: [Zero-order hold discretization of general state space systems with input delay](#) | IMA Journal of Mathematical Control and Information | Oxford Academic (1,609 views)

IMAIAI: [Simple, direct and efficient multi-way spectral clustering](#) | Information and Inference: A Journal of the IMA | Oxford Academic (1,335 views)

IMAMMB: [Model of Individual BMI Trajectories](#) | Mathematical Medicine and Biology: A Journal of the IMA | Oxford Academic (837 views)

TEAMAT: [Understanding mathematics anxiety: loss aversion and student engagement](#) | Teaching Mathematics and its Applications: An International Journal of the IMA | Oxford Academic (2,577 views)

Transactions: [Error estimates for DeepONets: a deep learning framework in infinite dimensions](#) | Transactions of Mathematics and Its Applications | Oxford Academic (1,967 views)

Conferences Committee

The Conferences Committee met in July 2024 and was co-chaired throughout the year by Dr Dan Tilley CMath FIMA and Professor Corina Constantinescu FIMA who worked closely with the IMA conference and events staff team.

A full list of members of the committee can be found at <https://ima.org.uk/roles/conferences-committee/>

2024 review

We registered around 900 delegates for IMA Conferences and events in 2024, offering a range of in-person and online conferences to again encourage more diverse attendance.

The programme for 2024 demonstrated the breadth of our activity, from education and early careers support, to showcasing the latest applied mathematics research in different fields and included a new addition to our conference programme: the IMA Artificial Intelligence and Machine Learning Congress.

2024 Calendar

January	Python for A-Level Mathematics and Beyond	Online
March	Where can Mathematics take you?	Online
March	AmplifyfIME Quantitative Finance Simulation	Online
April	ECM Networking Icebreaker at the BAMC 2024	Newcastle
April	Inaugural CMath Workshop	Online
May	Early career mathematicians and statisticians teaching in Higher Education Ideas Exchange: Knowing the Landscape	Online
June	Python for A-Level Mathematics and Beyond -Summer 2024	Online

September	Unlocking the potential: The IMA AI/ML Congress 2024	Birmingham
November	Management Mathematics in the age of AI (in partnership with IMAMAN Journal)	Online
November	2nd CMath Workshop	Online

In addition to the above, the IMA 60th anniversary event in October was a tremendous success, with 156 delegates registered and a diverse and highly engaging programme of talks, seminars and networking.

The events team also provided administrative support to the Tomorrow's Mathematicians' Today conference organised by the University of Greenwich in March, the Induction Course for New Lecturers in the Mathematical Sciences 2024 held in Cambridge on 16-17 September, the IMA Early Career Mathematicians online career development events and the IMA Virtual Maths Teas held throughout the year (see pages 22 and 29 respectively).

We would like to thank every mathematical organising committee for making these events possible, filling them with great invited speakers and delegates! We look forward to delivering a strong 2025 event programme.



Images top left, top right, bottom right: Inverse Problems Conference, Bottom left: New Lecturers Event

Mathematics Today

The IMA continued to publish six issues annually of our flagship membership magazine, *Mathematics Today* in 2024. The magazine provides refreshing insights into mathematics, applied mathematics topics, reflections on mathematical achievements, articles from IMA medal winners, updates on activities, and news on events and projects led by the IMA and our partners.

Online access to *Mathematics Today* introduced in 2022 provides IMA members with greater and more flexible access to their magazine via the myIMA platform. This is a more sustainable way to access *Mathematics Today*, with over 450 readers opting for an online-only version, an increase on 2023.

The Graham Hoare Prize for Early Career Mathematicians (ECM) was awarded to [Ramón Nartallo-Kaluarachchi AMIMA](#) for his article 'Mathematical Memory Machines' which was published in the December 2024 issue as part of an ECM Special Issue. This edition of MT celebrated the IMA's ECM members, with [guest editor Dr Jack Reid AMIMA](#), and it included articles from the IMA's first National Celebration of Mathematics Projects and other features from those early in their careers. We also celebrated the [IMA's 60th anniversary](#), with special focus on the ECMs at the celebration in October 2024.

The Catherine Richards Prize continues to select the best article published each year and this was awarded to Professor Adrian Rice for the article [Abel Answers the Question of the Quintic](#).



Communications and Community Engagement

The IMA seeks to work closely with the community it represents drawing on expertise from across our networks. Nathan Turner CMath FIMA, VP – Communications, chaired the Institute's Communications Committee in 2024 which is made up of maths communication experts and advises IMA staff throughout the year on related matters.

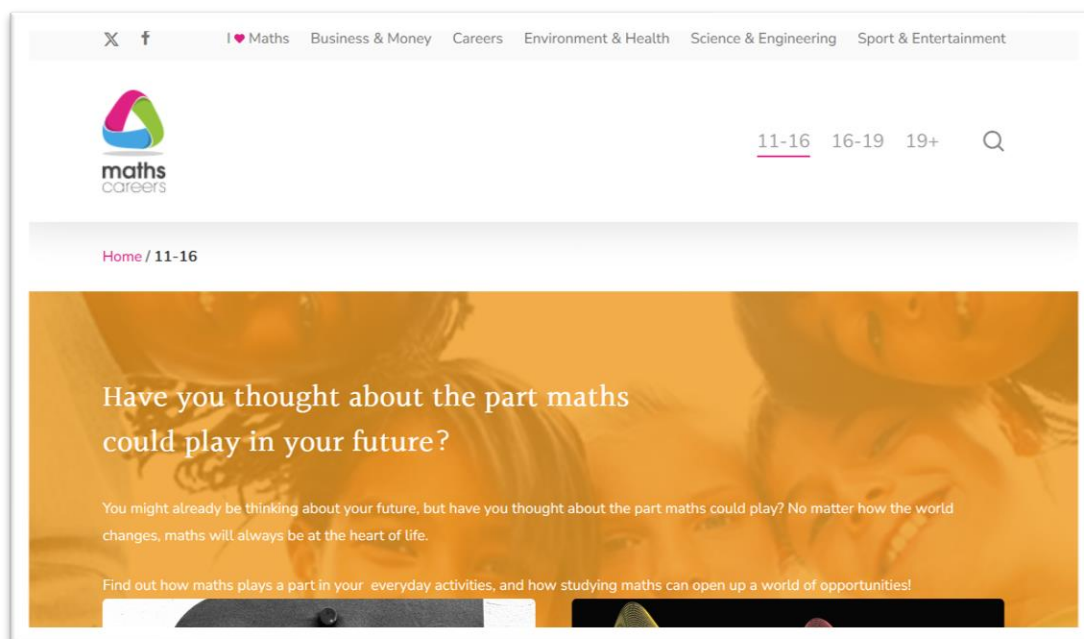
The MathsCareers Steering Group provides advice on content, topics and competition themes for our dedicated information, advice and guidance website which runs separately to the IMA's corporate site. The IMA also benefits from Branches across the UK, delivering regional and online engagement opportunities for the local community and beyond. Our Early Career Mathematicians Group provide activities targeted to the needs of the next generation of mathematical professionals. The Academic Liaison Group comprises representatives from university departments advising on university engagement and student support. Meanwhile, IMA staff representatives regularly provide talks to students and other key audiences.

MathsCareers Website

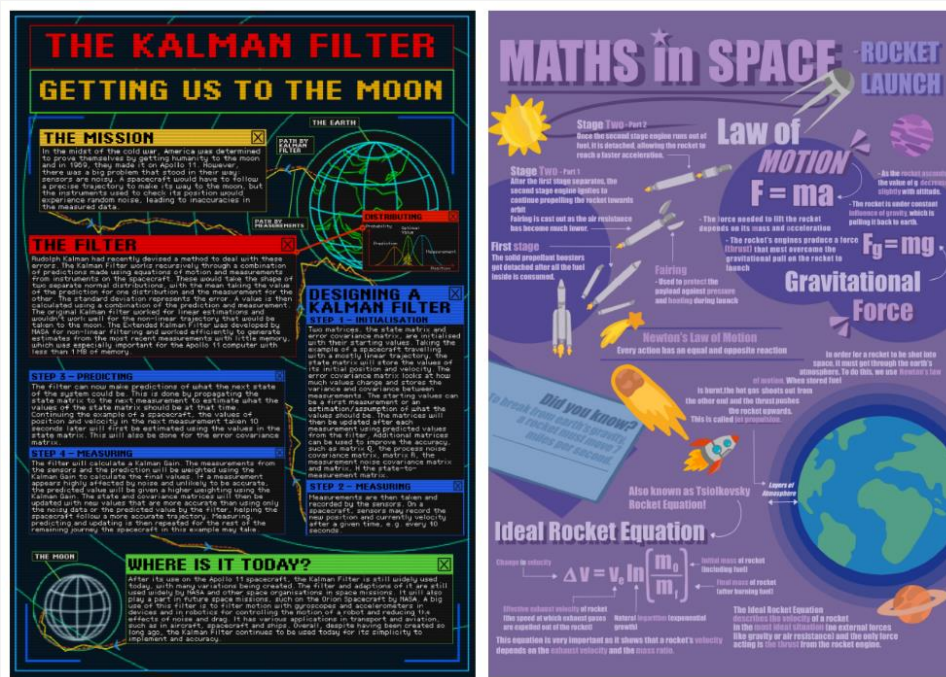
[MathsCareers.org](https://www.mathscareers.org) is a dedicated website which provides impartial information, advice and guidance on mathematics pathways as well as inspirational case studies from role models from a wide range of profession, and competitions for schools, working with experts from maths education and communication, industry and academia.



During 2024 MathsCareers received 187,787 sessions and continued to be one of the top websites of its kind within the STEM community, popular among undergraduates seeking career advice as well as school audiences. Highlights from content posted in 2024 include *Uses of Negative Numbers in the Real World* and *You Don't Need an A or A* To Study Mathematics at University*.



MathsCareers ran two contests during 2024. The spring contest had the theme of 'Design and create your own unique Board Game.' and the Autumn contest asked entrants to create a poster about the use of maths in space exploration. Competitions are aimed at ages 11-18 with age groups based on school year (Years 7- 9, and 10 - 13). MathsCareers poster contests frequently attract between 200 – 300 entries.



L: years 10 – 13 winner, Nithika, Newstead Wood School, R: years 7 – 9 winner Sheryl, Woodbridge School

Our career profiles continue to highlight diversity among those working in mathematics-based professions, as well as demonstrating the wide variety of roles available to maths graduates. The website also showcases how maths and numeracy is vital in other areas, from space exploration to computer game design, music and climate science.

Social media is used to raise the profile of IMA MathsCareers, and it now has 7698 followers on X / Twitter. The profile of the site, as well as mathematics generally, is raised via the distribution of eye-catching classroom posters to schools.

IMA e16plus Newsletter

The e16plus Newsletter published six full editions in 2024. It is designed to inspire and raise interest in mathematics amongst 16–19-year-olds and has 1621 subscribers. The regular puzzle feature continues to be popular with readers, and the links in the newsletter are designed to encourage engagement with MathsCareers and the IMA websites.

IMA Website and Social Media

The good work the IMA does is reflected across our social media channels, website and our member exclusive eBulletin. We have a collective of 56,000 followers across our four main social channels Twitter, Facebook, LinkedIn and Instagram, consisting of those interested in the services and work of the IMA and those interested in Mathematics in the wider sense. This is an increase of 12% from 2023.

We continue to celebrate the successes of our members and the wider mathematics community. In particular, raising the profile of Mathematics across a multitude of celebratory and awareness days promoting inclusivity. We continue to see particularly high engagement and popularity with our campaigns during LGBTQ+ History Month, Women's History Month and Black History Month where we share people's stories, resources and celebrate the successes and triumphs of those who have overcome challenges and biases. We engage in many mathematical days such as Fibonacci Day, International Day of Mathematics, Maths Weeks to name a few as well as other STEM related days and National Numeracy day, which is helping raise low levels of numeracy among both adults and children in the UK and promoting the importance of everyday maths skills to the wider public, challenging negative attitudes towards mathematics.

Publicly available sources indicate that the website receives approximately 90K visitors per year, with an average visit time of 3.56 minutes. 28% of visitors are from the UK. 38.9% of visitors access the website via referral (e.g. social media etc.) and 40% through search engines.

Enhancing our digital newsletters for members and the community

In 2024, significant improvements were made to the members' digital newsletter. An external platform was implemented to track analytics, enabling more tailored content based on member engagement. The newsletter has doubled in frequency and features an updated design and structure. Additionally, a new Community newsletter for non-members was introduced and will be further developed.

The newsletter's performance is exceptional, with a 59% open rate and a 12% click rate. When compared to other societies at the Science Council Marketing and Communications Forum in October 2024, the IMA's statistics demonstrated an open rate that is on average 25% higher and a superior click rate.

Virtual Maths Teas

Our Virtual Maths Tea series is a collection of online events where members can come together for an informal discussion, much like a coffee morning. Each individual event has its own topic of focus and hosts are hand-picked for their expertise and experience in each topic area. The Virtual Maths Teas (VMTs) began during lockdown in 2020, to keep our members connected when in-person networking and events weren't possible and were continued post-lockdown due to their popularity.



Many attendees have commented that the VMTs are their first opportunity to engage in an IMA event, or indeed any mathematical event due to their individual access challenges. Each VMT lasts for one hour, attendees can log in from anywhere in the world (and international attendees regularly participate). The VMTs are inclusive events, open to all IMA members of all grades, genders, backgrounds, and interests and popular themes include career development, ethics and diversity and inclusion. The Early Career Mathematician committee were again greatly involved this year, chairing three out of six Virtual Maths Teas.

In 2024 we hosted the following Virtual Maths Teas with 221 registrations in total:

- February – Imposter Syndrome
- February – Progressing from your PhD into your early career as an academic
- March – Inspire Inclusion: Women in Mathematics
- April – AI in Assessment
- June – Interviewing for a role in Industry
- December – Lifelong Mathematics Learning in Industry

Academic Representatives

The Academic Representatives partnership, established by the Institute in 2017, continues to grow and evolve, strengthening our engagement with the academic community. We currently have 62 Representatives across 67 universities, who play a key role in promoting the work of the IMA to their colleagues and students, as well as providing valuable feedback on the priorities of academic members.

In 2024, we saw significant progress in the scheme's development. The return of in-person engagement was a major highlight, including the successful Academic Representatives Forum. Mathematicians from across the country gathered at De Morgan House in London for the IMA Academic Representatives' Forum June 2024, marking its return after six years with a hybrid format.



Academic Representatives convene at the Annual Forum

IMA President Professor Hannah Fry HonFREng FIMA sent her best wishes via a pre-recorded message, while Dr Howard Haughton CMath FIMA opened with a powerful talk on the role of Maths and AI. Rosalind Azouzi, the IMA Executive Director, shared updates on digital provisions, including a mentoring scheme and new career development tools. Paul Glaister CBE CMath CSci FIMA discussed accreditation developments, while Chris Breward FIMA from the KE Hub highlighted knowledge exchange initiatives. Martine Barons CMath FIMA championed local branches, and James Van Yperen AMIMA encouraged Early Career Mathematicians to engage

with IMA activities. Rachel Bearon FIMA introduced the Academy for the Mathematical Sciences and its funding efforts, noting Professor Dame Alison Etheridge DBE OBE FRS FIMA as its first president. Jenny May Roberts, IMA Membership Development & Marketing Executive, finished with outlining support for university departments, to enhance engagement.

The event concluded with valuable networking, leaving attendees inspired to further promote the IMA.

To enhance communication and engagement, we launched a bi-monthly Academic Representatives newsletter, providing updates, resources, and opportunities to contribute to IMA initiatives and further to feedback, in 2025, we will run both online and in-person meetings. This blended approach allows for greater accessibility and participation from representatives across the UK.

Additionally, Jenny May Roberts (IMA Membership Development & Marketing Executive) now delivers IMA early careers and professional membership talks both in person and online at universities throughout the UK, further supporting academic engagement and student outreach. The Academic Representatives partnership remains a vital part of our mission to connect with academia and the mathematics community, ensuring that the voices of academics and students continue to shape the work of the IMA.

Branches

IMA Branch committees are led by local IMA members and volunteers across the UK, offering free talks on mathematics topics to members and non-members.

The Branches are:

- East Midlands
- London
- North West
- Scottish
- West Midlands
- South West and Wales

We were delighted to approve a new Branch for the Yorkshire area and also begin discussions with representatives in Northern Ireland and Eire about the possible revival of Branch activities there.



During 2024, our Branches delivered free talks covering an array of current and interesting topics:

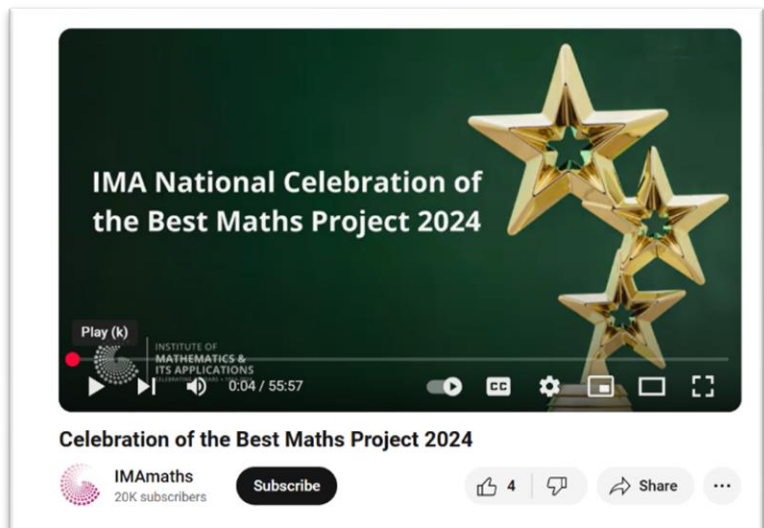
Branch	Speaker	Theme	Location	Date
West Midlands	Professor Alan Champneys CMath FIMA	Synchronisation and the Wisdom of the Crowd	Aston University, Birmingham	08/02/2024
North West	Professor Stephen Lynch FIMA	Online Workshop: Python for A-Level Mathematics and Beyond - Summer 2024 (workshop - Friday)	Online	28/06/2024
North West	Professor Stephen Lynch FIMA	Online Workshop: Python for A-Level Mathematics and Beyond - Summer 2024 (workshop - Saturday)	Online	29/06/2024
West Midlands / North West	Dr Snezana Lawrence FIMA, Prof Serafina Cuomo, Prof Jon Agar	What Do Mathematics and Society Owe Each Other? A Panel Session chaired by Dr Michael Barany of the University of Edinburgh	Online and satellite venues	10/09/2024
East Midlands	Dr Bethany Wollacott	Through the Lens: Insights into Mathematical Textbooks and Mathematical Reading	Online	30/09/2024
West Midlands	Dr Rowland Seymour	Scale of Harm: Estimating the Prevalence of Trafficking to Facilitate Online Child Sexual Exploitation in the Philippines – in partnership with the Royal Statistical Society	University of Birmingham	02/10/2024
SW & Wales	Professor Chris Budd OBE CMath FIMA and Xavier Bertrand FRAeS	AI in Aerospace – in partnership with the Royal Aeronautical Society	Aerospace Bristol	10/10/2024
AWE Branch	Professor Ian Hall OBE	Challenges in Modelling Infectious Disease Outbreaks – in partnership with the Institute of Physics	Aldermaston Recreational Society	16/10/2024
East Midlands	Professor Nira Chamberlain OBE CMath CSci FIMA	The Mathematics That Can Stop an AI Apocalypse	Nottingham Trent University	31/10/2024
Yorkshire	Robyn Goldsmith	Breaking the (Mathematician) Mould: Removing Barriers to Mathematical Belonging through Maths Outreach	Sheffield Hallam University	13/11/2024
ECM/All Branches	Will Barnfield and Maria Esteban Casadevall	IMA National Celebration of the Best Maths Project 2024	Online	11/12/2024
West Midlands	Aysar Ghassan	Christmas Lecture: Art-Design in the Automotive Industry (joint IET/BCS/IMA West Midlands event)	Online	11/12/2024

Where permission was granted, talks are available on the [IMA YouTube Channel](#).



Top: IMA SW & Wales Branch and RAeS Reps at the AI in Aerospace event, Bottom: Through the Lens, Bottom Right: Dr Bethany Wollacott and Professor Nira Chamberlain deliver talks for the East Midlands Branch.

Below: Anjulika Salhan speaking at the AI/ML Conference, Screenshot of the IMA Best Maths Project 2024 – now available on the IMA's YouTube Channel.



Early Career Mathematicians

The Early Career Mathematicians (ECM) Group provides early career professionals from industry, academia, and government with opportunities to develop their skills, network with peers, and engage with the wider mathematical community. In 2024, the committee was chaired by Ms Robyn Louise Goldsmith and successfully delivered a range of events, including Virtual Maths Teas, online conferences, and seminars, offering valuable professional development and networking opportunities.

2024 marked the 20th anniversary of the ECM Group, coinciding with the IMA's 60th anniversary, a milestone year for both. To celebrate, the IMA hosted a special anniversary event in London, attended by current President Hannah Fry HonFREng FIMA alongside several past presidents. This was an opportunity to reflect on the ECM Group's impact over two decades, supporting early career mathematicians in building networks and advancing their careers.

We also held a special 'Evening with the ECMS' following the March Council meeting in London. Here the committee leads presented their current plans and engagement opportunities, and the evening was filmed for the IMA's YouTube channel.



Attendees at the Evening with the ECMS event

The ECM Group continues to adapt and evolve, offering hybrid engagement opportunities. Virtual Maths Teas remain a popular online space for discussions for this audience, and a new 'What is ...!' series introduced by the committee this year showcasing maths careers pathways from professionals such as data scientists and operational researchers, but may also cover topics as wide as good programming practices. Additionally, the expansion of online seminars allows researchers to share their work more widely, further enhancing connectivity between early career mathematicians across different sectors.

As we move forward, the ECM Group remains committed to providing a welcoming and dynamic platform for early career mathematicians to learn, collaborate, and grow within the IMA community.

The ECM Group continues to help recruit student members and is also active on social networking sites.

2024 ECM Events:

Speakers	Theme	Location	Date
ECM Group	An Evening with the IMA's ECM Community	De Morgan House	27/03/2024
Maria Esteban Casadevall and Veronica Bitonti AMIMA	ECM Seminar: Tomorrow's Mathematicians Today 2023 Winners	Online	11/06/2024
Ziyang Yang	Lunch and Learn: Smarter, Safer and More Sustainable Internet of Things Monitoring	Online	25/06/2024
Mingjia Yan AMIMA and Andi Hani	ECM Seminar: Tomorrow's Mathematicians Today 2024 Winners	Online	15/08/2024
ECM Group	Panel Sessions – IMA Celebration Event	Savoy Place	16/10/2024
Adél Drew FIA (Milliman UK), Christopher Grassick (Government Actuary's Department) and Joshua Molloy (Lane Clark & Peacock LLP)	What is an Actuarial Analyst?	Online	28/10/2024
Stella Robinson AMIMA (Civil Service), Lucy Gullon (Industry), Arshia Kaul (Academia) and Frederique van Leeuwen (Consultancy)	What is an Operational Researcher?	Online	19/11/2024
VMT	ECM VMT: Lifelong Mathematics Learning in Industry	Online	09/12/2024

Reaching and supporting our community

University Engagement

The IMA continues to work closely with universities to raise awareness of the Institute and promote membership, and encourage participation among undergraduate and postgraduate students, as well as the wider academic community. We support the development of student mathematical societies by providing grants, careers talks, and engagement at student conferences and careers events.

In 2024, we provided grants to mathematical student societies across the UK, including IMA-SIAM Joint Student Chapters, and awarded Undergraduate Prizes to societies at some of the UK's leading universities. The IMA also played an active role in supporting Maths Society activities, conferences, competitions, and talks, as well as participating in key IMA-led conferences to further strengthen our connections with students and academics.

Undergraduate talks delivered over 2024:

- Imperial College London
- University of Greenwich
- University of Plymouth
- University of Lincoln
- University of Essex
- Nottingham Trent University
- University of Liverpool – provided video
- Heriot-Watt University
- Lancaster University
- Northumbria University
- Aston University
- Middlesex University
- Newcastle University
- University of Salford
- University of Southampton

Membership Development

This evolving role continues to build on relationships established by the past work of our University Liaison Officer (ULO), with an increased focus on supporting members across the mathematical community. Our aim is to expand opportunities, promote the value of IMA membership, and improve engagement within both academic and industrial sectors.

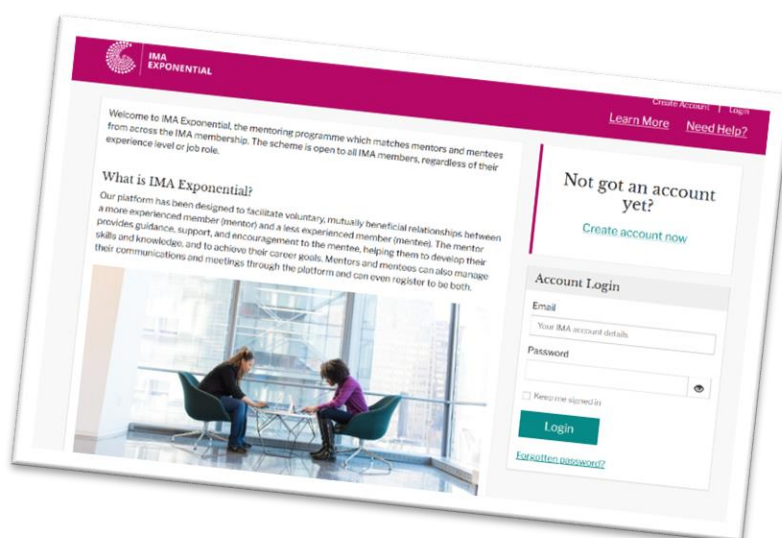
We are continuously reviewing ways to recruit, retain, and engage members at all career stages, ensuring that the IMA remains relevant and beneficial throughout their professional journey. This includes promoting IMA membership to graduates at industry events and exploring and developing new membership benefits that cater to the diverse needs of our community.

By strengthening these connections, we aim to create a thriving, engaged membership base that supports mathematicians at every stage of their career.

Mentoring

In 2024, a major achievement was the launch of the IMA Exponential Mentoring Scheme, an online platform to enable mentoring relationships between members, which has exceeded our expectations in uptake.

In November, we produced a video “Exploring Opportunities Through Mentoring with Dan Tilley & Adrian Bell”. In this Interview Jenny May Roberts, IMA Membership Development Executive and Nathan Turner CMath FIMA, IMA VP Communications meet with IMA members Daniel Tilley CMath FIMA and his mentee Adrian Bell AMIMA to discuss their professional mentoring journey. We unpick the intricate details of the opportunities and personal development it can bring to both mentee and the mentor.



Other Key Engagement Activities

Event	Date
Retreat for Women in Applied Mathematics Online Event	January
Innovating Interchange STEM Futures Partner Event - London	March
IMA overview at Tomorrow's Mathematicians Today Conference online	March
Maths Summit - London Science Museum	March
NTU Nottingham Trent University - Mathematics Degree Showcase	March
BAMC Conference 2024 – Newcastle	April
Memberwise - Member Solutions Day	October
Maths Parliamentary Expo Event, Westminster	November
Memberwise Conference	November
AWE Graduate Professions Day	November



Top Left: The IMA stand, set up for an outreach event. Top Right and Below: Attendees gather for the 2024 Memberwise Conference

Equity, Diversity and Inclusion in Mathematics

The IMA is a signatory of the Science Council Declaration on Equity, Diversity and Inclusion (EDI). Dr Howard Haughton CMath FIMA is the IMA's EDI Champion. In this role he advises the Executive Board and Council on EDI-related matters and is chair of the IMA's EDI Committee.

The Committee met regularly throughout 2024 with a focus on developing an EDI specific strategy for the IMA, with actionable steps and associated metrics to measure progress, following the recommendations the Committee made during our strategic review in 2023. The Strategy was presented to Council and approved in 2024.

"This strategy reflects the IMA's steadfast commitment to fostering an environment where all individuals in the mathematical sciences feel valued, respected, and empowered to achieve their full potential.

We recognise that EDI is a journey requiring continuous learning and improvement. Our strategy is a living document, with clear metrics to track progress, ensuring that our intentions translate into tangible impact.

I encourage all members to explore the strategy and join us in our mission to make the mathematical sciences more inclusive, equitable, and reflective of the diverse world we serve."

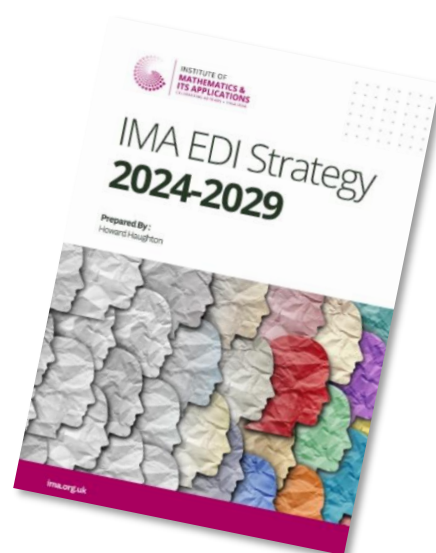
Dr Howard Haughton CMath FIMA

The IMA continues to provide or support a number of events which support and showcase the achievements of underrepresented groups in mathematical fields. 2024 highlights include:

- Online Retreat for Women in Applied Mathematics Online Event in January;
- International Women's Day Virtual Maths Tea event in March;
- EDI Panel session at the IMA 60th Celebration in London in October;
- Black Heroes of Mathematics 2024 Conference in October;
- Continued commitment to increasing engagement from underrepresented groups through the e16plus Newsletter, MathsCareers website and social media activities;
- Continuing our partnership with the Levelling Up: Mathematics programme to support A Level tuition for underserved communities, developing a new pathway for A Level Maths students aiming to go on to study or an apprenticeship in Engineering.

Dr Haughton maintained his role promoting mathematics and associated career opportunities within the London International Youth Science Forum (LIYSF) which invites STEM students from around the world to participate in a two-week programme of learning in the UK each July.

The Executive Director continued to represent the IMA on the Science Council/Royal Academy of Engineering Progression Framework Implementation Group. This year's work focused on updating the Framework for a new benchmarking activity in 2025.



Professional Affairs and Industry

Mathematicians play a vital role across business, industry and government. Chaired during 2024 by VP Professional Affairs Dr Jennifer Macey CMath CSci FIMA, the IMA's Professional Affairs Committee (PAC) brings together representatives from IMA Corporate Affiliates and those with expertise in applied mathematics in a variety of industrial and commercial settings.

The committee is also responsible for the IMA's Chartered Mathematician (CMath) designation and the IMA professional Codes of Conduct. PAC also oversees the IMA's requirements to the Science Council as a licensed body to assess Chartered Scientist (CSci) applications, including meeting external quality assurance requirements and CPD compliance. PAC also supports the IMA's contribution to the Data Science Professional recognition framework.

Details of our Corporate Affiliate members can be found at: <https://ima.org.uk/affiliates/corporate-affiliates/>

Professional Affairs Committee

The Committee met several times during 2024 via remote conference facilities and also in person in London. PAC also have communicated throughout the year via Basecamp, with a particular focus on

- Delivering the IMA 2023-2028 Strategy
- AI and Mathematics
- Data Science Certification
- The IMA's proposed EDI Strategy
- Encouraging take-up of the IMA Exponential Mentoring scheme
- IMA support to employer engagement programmes such as STEM Futures

During the course of the year Jenny Macey announced that she would be stepping down as VP and Chair of PAC at the end of her two-year term in December (but would remain as a member of the committee). The committee decided to seek expressions of interest for the role via a notice in *Mathematics Today* which garnered significant interest from members. After assessing the applications, the Nominating Committee of the IMA decided to appoint Dr Andrew Harrison FIMA who took up the role of Vice-President and Chair of the newly named Business, Industry and Government (BIG) Committee on 1 January 2025.

The Committee wishes to note and thank Jenny Macey for her exceptional contribution to the work of the committee, not only as Chair but also over a number of years as a committee member. In particular, her leadership during the strategic review and then the implementation phase in 2024 has re-focused the committee's priorities, leading amongst other things to the renaming as mentioned above and ensuring an inclusive approach in decision-making.

Strategy Review and Implementation

The committee agreed to set up Task and Finish groups around three initial projects in support of delivering the 2023-2028 Strategy:

1. Terms of Reference

Examine PAC values and responsibilities and ensure the new Terms of Reference accurately reflect the evolution of PAC (including potentially renaming the Committee towards Business, Industry and Government). Review committee's role and areas of strategic support to the IMA,

maintaining advisory role for professional standards but exploring options for oversight within Membership function.

2. Value Proposition and Industry Offer

Review the Institute's Corporate Affiliate offer, including accreditation of graduate and other training programmes for charterships, looking at ways to increase recognition of mathematics in industry settings and creating a network of industry representatives similar to the success of the Academic Representatives scheme.

3. Activities and Partnerships

Reviewing use of terminology, representation of BIG within IMA awards (e.g. opportunities to recognise achievement by mathematicians in business, industry and government settings) and developing further events to support those working in industry.

Data Science Professional Standards



In 2024 the Alliance for Data Science Professionals (AfDSP) appointed a new chair, former IMA Council member Professor Edward Rohead CMath FIMA. Two new organisations joined the Alliance: The American Statistical Association and Wellcome Sanger Institute. The new members and new chair joined a meeting in January at the Alan Turing Institute, and the Governing Board met online in April 2024. The IMA only has a few ADSP applicants at present, the Charter application (through RSS) is in progress awaiting Privy Council feedback.

PAC members also volunteered to join the IMA's ADSP application review group, chaired by Professor Paul Glaister CBE CMath CSci FIMA, to begin awarding certification to qualifying existing Advanced Members.



Members of the Alliance for Data Science Professionals attended the British Data Awards in May 2024, Where AfDSP were named as one of the finalists.

Recognition and Professional Standards



IMA membership grades are designed to suit every level of mathematical interest, from current students to professional and experienced mathematicians. Advanced Membership offers two grades to recognise professional achievement: Member and Fellow. Applications are overseen by the Membership Committee. This Committee also oversees applications for the Chartered Mathematician, Chartered Scientist and Chartered Mathematics Teacher designations.

The IMA, both independently and in partnership with others, also offers a number of medals and prizes which recognise mathematical achievement across a diverse spectrum. The Institute's Gold Medal is awarded in recognition of outstanding contributions to mathematics and its applications over a period of years, with medals being awarded every two years.

Professional Registration and Membership

The Membership Committee is delegated by Council to assess individual membership application and in 2024 was chaired by the Honorary Secretary – Membership, Professor Paul Glaister CBE CMath CSci FIMA. The Membership Committee is made up of Chartered Mathematicians and Scientists who are Fellows of the Institute. They have a background in at least one of the following major areas of employment for mathematicians: academic research and teaching, schools and further education, industry, commerce, finance and IT.

In 2024 we have had the privilege to welcome 677 new members and assist 115 existing members in transferring to a higher grade.

Membership at 31 December 2024:

Honorary Fellow	18
Fellow	1371
Member	1235
Associate Member	1685
Affiliate	422
Student	414
Total	5145

Of the above memberships, 1,320 are registered as Chartered Mathematicians and 177 as Chartered Scientists.

The Chartered Mathematician (CMath) designation represents high levels of professionalism and competence in mathematics. It is awarded by the Institute of Mathematics and its Applications to practising professional mathematicians who demonstrate, as well as their professional status and competence, a commitment to keep pace with advancing knowledge in mathematics and its applications.

The Institute has continued to support UK University Mathematics Departments by offering over 100 IMA Graduate Prize Memberships in 2024.

Chartered Mathematics Teachers

The Chartered Mathematics Teacher Registration Authority consists of representatives from IMA, Association of Teachers of Mathematics, Mathematical Association, and National Association of Numeracy and Mathematics in Colleges. Professor Paul Glaister CBE CMath CSci FIMA, the chair of the Institute's Membership Committee, also chairs the Chartered Mathematics Teacher Registration Authority. At 31 December 2024, we have 41 registered Chartered Mathematics Teachers.

Medals and Awards

2024 Presidential Address

The 2024 Presidential Address was held at the University of Greenwich, where Professor Hannah Fry HonFREng FIMA gave her Presidential Address, 'Making Sense of Cancer; Communicating Difficult Statistics to the Public'. The event was a huge success.



The following Certificates of Service were awarded at the IMA Presidential Address, held in June 2024.

Academic Representatives since 2020

- Dr Chris Antonopoulos MIMA
- Dr Joseph Bailey MIMA
- Dr Thomas Waters MIMA

ECM Members > 3 years' service

Nicholas Brusby CMath MIMA – For over 3 years dedicated service to the ECM and IMA Branches in a variety of roles, and more recently his service to the IMA as a Council Member and a member of the Communications Committee.

Branch Representatives > 3 years' service

Russell Thersby CMath CSci FIMA, for dedicated service to the North West Branch since 2020

Special Recognition Awards

Dr Ellen Brooks-Pollock OBE FIMA – Long service award.

Ellen has been a member of the *Mathematics Today* Board since Sept 2017.

Professor Paul Glaister CBE CMath CSci FIMA – Long Service award.

Paul has been the Honorary Secretary - Membership for 3 years (with another 3 to serve), the duties for this role means he is the Chair of the Membership Committee, Membership Committee Qualification sub-group and CMath Registration Authority. Plus being a member of the Professional Affairs Committee, Council, EB and Nominating Committee. Prior to being on Council as the Honorary Secretary, Paul also served 6 years as an elected member. Paul has been on Schools and FE committee for almost 9 years and is involved with programme accreditation. Paul has also been heavily involved with the launch of the Advanced Data Scientist Professional scheme.

Catherine Richards Prize

Matthew Cotton AMIMA & Brady Metherall AMIMA were awarded the Catherine Richards Prize for the best article published in *Mathematics Today* "Settling Scores and Gambling on Goals."

Honorary Fellowship

Professor Dame Celia Hoyles DBE CMath FIMA, was presented with an Honorary Fellowship of the IMA. Dame Celia has made outstanding contributions to the improvement of the teaching of mathematics throughout her distinguished career. She served with distinction as IMA President for the 2014 – 2015 term, during which time, she was made a Dame Commander of the Order of the British Empire in 2014 for services to Education.

IMA/LMS David Crighton Award Lecture and Medal Presentation 2024

Professor Dame Alison Etheridge DBE OBE FRS FIMA was awarded the David Crighton Medal in 2023, and her presentation took place on 18 April 2024 at the Royal Society. The medal is awarded jointly by the IMA and the LMS and is a biennial event. Alison's lecture, "Modelling Genes", discussed some of the ways in which apparently simplistic mathematical models can capture some of the essence of evolution and display a rich and beautiful mathematical structure.

IMA David Youdan Medal 2024

The 2024 IMA David Youdan Medal was awarded to Professor Alan Champneys CMath FIMA in recognition of his sustained and outstanding contribution to the IMA in many roles both within the IMA and with external partners. His citation, detailing some of his numerous achievements can be found [here](#).

His award was presented at an event in November, where he presented a talk on 'Breaking the rules, the role of creativity in mathematical sciences'. A recording of the lecture is available [here](#).

IMA/LMS Christopher Zeeman Medal 2024

The Councils of the IMA and the LMS were delighted to announce in August that Brady Haran the creator of Numberphile was to receive the 2024 Christopher Zeeman Medal, which has featured guests including our own President Hannah Fry HonFREng FIMA, Simon Singh MBE Hon FIMA and Matt Parker, who are all previous recipients of this prestigious award. An event to present Brady with his award will take place in May 2025. [Details can be found on our website](#).



L-R: Alan Champneys delivers his talk for the David Youdan Medal, Professor Dame Celia Hoyles receives her Honorary Fellowship at the Presidential Address, Professor Dame Alison Etheridge delivers her talk at the Royal Society.

Looking Ahead – 2025

In 2025 we will focus on building on the legacy of our 60th anniversary celebrations in 2024; and the delivery of key projects aligned to our objectives within Phase 1 of the IMA 2023-2028 strategy. Highlights include:



Developing new Special Interest Groups

With two Special Interest Groups – Climate and Sustainability and the Mathematics of AI – now attracting volunteer leads, we will work closely with each group’s committees to help deliver their first outputs. We will continue to support the formation of IMA SIGs in other areas.

Delivering the EDI Strategy

The IMA EDI Champion will lead the EDI committee in developing EDI practices and activities in the IMA in pursuit of our EDI goals. We will also take part in the 2025 Progression Framework Benchmarking Report for professional bodies in sciences and engineering, led by the Royal Academy of Engineering and the Science Council.

Leading LUM and LUMEng

The IMA has agreed to become the lead partner for the Levelling Up: Mathematics programme from 2025. We will work closely with the LMS and participating Maths departments. We will also build new links with Engineering Departments across the UK for the Engineering pathway. The latter also enables participation from apprentices for the first time and we will assess the impact of this and look to further grow awareness and support for LUM and Engineering over the coming year.

Course Accreditation

Following a review led by the IMA Honorary Secretary for Education and HEC volunteers over 2024, we will launch a new Accreditation Handbook for Universities and associated improvements to the scheme.

This is notwithstanding the considerable financial pressures on universities, which are acutely felt by Maths departments at low-tariff universities, in particular. We will work closely with external partners to support those in need and demonstrate the vital role that mathematics plays in higher education, research and development, and in preparing graduates with key skills needed for the economy in an AI and data-driven world.

IMA Foundation

We will aim to create awareness and the infrastructure for the IMA Foundation, a designated fund to manage IMA grants, awards and support for education programmes and activities over time. This will include fundraising training for staff and exploring ways to enable donations of all sizes from members and supporters, including our new CRM.

Building on mentoring

Following its successful launch in 2024, promotion of the IMA Exponential mentoring platform will continue. We will facilitate ways to share mentoring stories, tips and guidance from IMA mentors and mentees based on their experiences.

Continuing our digital transformation

Our efforts to create a sense of belonging and increased community engagement through enhancing our digital offering will continue. We will launch a new online careers platform in early 2025 to provide members at all career stages with free access to a wide range of advice, career/professional development courses and CV and interview techniques.

We also begin a major digital infrastructure project to identify a new CRM and myIMA portal for the Institute which will improve the experience of those using our services, as well as streamline our internal processes and service provision and enable increased communication and engagement levels with our community.

Refreshing *Mathematics Today*

A group of experts from the MT Editorial Board, including the Editor in Chief and IMA VP Communications along with key staff have formed a project group to review *Mathematics Today* with a view to creating a new look and feel which will celebrate the role that mathematics plays in modern society, all while retaining the high quality content and insights into mathematics topics which the magazine has become known for. We hope to finalise the new design in late 2025 to include opportunities to build on digital engagement.

Developing local community links

Completing the relocation to more modern, sustainable and collaborative workspace in Southend will be a key focus for the senior leadership team. As part of our continued commitment to the area, we are planning to work with a local arts charity to create a special Mathematics & Art project, developing brand new engagement opportunities with our local community and bringing the knowledge from UK-wide mathematicians to local artists and schools.

Education Kits

Work on refreshing and updating our new Education Kits will be completed this year. Working closely with Oxford Brookes University's academic staff and students, we aim to introduce some exciting new aspects of mathematics in action to our exhibition stands to inspire new generations at the Big Bang, RIAT and other STEM events around the country.

Content creation

We will continue to record the lectures given by our prestigious prize winners and look forward to this year's IMA Gold Medal lecture, to be presented by Professor I. David Abrahams CMath FIMA in June.

Increased engagement with mathematicians in Business, Industry and Government

We will aim to deliver the outputs of the Professional Affairs Committee working groups, including a new focus for the committee, a new network for mathematicians in industry to connect with the IMA, and a review of our Corporate Affiliate offering including accreditation of graduate training and other programmes.

International Growth

We will convene a working group of experts to review the IMA's European and international links and partnerships with a view to building on interest from international members in forming new Branches and developing engagement opportunities overseas and online.

PART TWO:

Finance, Governance, Risk and Financial Statements

Finance and Governance

The Institute's Head Office is:

Catherine Richards House,
16 Nelson Street,
Southend-on-Sea,
Essex, SS1 1EF.

Its bankers are:

Lloyds Banking Group,

Business Service Centre,
Sedgemoor House,
Deangate Avenue,
Blackbrook Business Park,
Taunton, TA1 2UG.

Its auditors are:

Rickard Luckin
1st Floor
County House
100 New London Road
Chelmsford
Essex, CM2 0RG

Council

The constitution of the Council for the financial year 1 January - 31 December 2024, and subsequent period 1 January 2025 – 31 March 2025 - during which time this report was reviewed - was as follows:

PRESIDENT

Professor Hannah Fry HonFREng FIMA

VICE-PRESIDENTS

Mr Nathan Turner CMath MIMA	(from 1 January 2024)
Dr Martine Barons CMath FIMA	(to 31 December 2024)
Dr Eduard Campillo-Funollet MIMA	(from 1 January 2025*)
Dr Jennifer Macey CMath CSci FIMA	(to 31 December 2024)
Dr Andrew Harrison FIMA	(from 1 January 2025)

**Already an elected Member of Council at the time of appointment.*

HONORARY TREASURER

Professor Andrew Osbaldestin FIMA

HONORARY SECRETARIES

Professor Paul Glaister CBE CMath CSci FIMA
Professor Catherine Hobbs CMath FIMA

PAST PRESIDENTS

Professor Alistair Fitt CMath CSci FIMA
Professor Nira C Chamberlain OBE CMath CSci FIMA
Professor Paul Glendinning FRSE FIMA

OTHER MEMBERS OF THE COUNCIL

Elected Members

Ms Claire Baldwin CMathTeach MIMA

Mr Declan Bays MIMA

Professor Alexander Belton CMath CSci FIMA

Ms Emma Bowley CMath MIMA

Dr Keith Briggs FIMA

Professor Christopher Budd OBE CMath FIMA

Dr Eduard Campillo-Funollet MIMA (also appointed Vice President effective 1 January 2025)

Dr Sophie Carr CMath CSci FIMA

Professor Anthony Croft FIMA

Dr Howard Haughton CMath FIMA (from July 2024)

Professor Timothy Phillips FIMA

Dr Richard Pinch CMath CSci HonFIMA

Co-opted Members

Mr Nicholas Brusby CMath MIMA (until 31 December 2024)

Ms Robyn Goldsmith (term ends on 31 January 2025)

Dr Rosalyn Porter FIMA

Professor Stephen Lynch FIMA (from 1 January 2025)

Dr Maciej Matsuzewski MIMA (until 26 June 2024)

Professor Anastasia Sofroniou FIMA

The following completed their term of office as Councillor and Trustee at the AGM on 26 June 2024:

Mr Chris Chipperton CMath CMathTeach FIMA

Dr Francisco de Melo Viríssimo AMIMA

Dr Snezana Lawrence FIMA

Professor Graham Niblo FIMA

The following completed their term of office as Councillors and Trustees on 31 December 2024:

Dr Martine J Barons CMath FIMA, Vice President with responsibility for Learned Society

Dr Jennifer Macey CMath CSci FIMA, Vice President with responsibility for Professional Affairs

Professor Hannah Fry HonFREng FIMA, who became President on 1 January 2024 chaired Council as it considered the content of this report.

In 2024, Councillor nominations exceeded vacancies, so a ballot was held. Following the ballot, Council was pleased to welcome the following to serve as members of Council and Trustees effective from the close of the AGM held on 26 June 2024:

Professor Alexander Belton CMath CSci FIMA

Dr Keith Briggs FIMA

Dr Richard Pinch CMath CSci HonFIMA

Dr Howard Haughton CMath FIMA (was co-opted Councillor until 27 June 2024)

Dr Sophie Carr CMath CSci FIMA was re-elected (byelaw 38A)

The members of Council are also the Trustees.

Appointment of Trustees

The appointment of Trustees is governed by the Royal Charter byelaws 35 to 43.

No person or external body is entitled to make such appointments.

Past Presidents

Royal Charter byelaw 36. The immediate three Past Presidents who are able and willing to serve and are Advanced Members of the Institute shall be ex-officio members of Council.

It is customary for there to be three past presidents to sit on Council. Should Past Presidents choose to remain on Council for all or part of this time, they will remain Trustees.

Elected Members

The election of members begins with an open call for nominations. The Notice advises our members how many places are available for election that year. The process begins with a call for nominations at least ten weeks before the annual general meeting. In previous years, the call for nominations was aligned with the publication schedule of *Mathematics Today*. However, in 2024, the IMA transitioned to a digital nominations and elections process, eliminating the need to coordinate with publication dates, with provisions in place for those members who prefer postal communications.

The Royal Charter states: "39. Election of the elected members of the Council shall take place in the following manner: -

- (A) Not less than ten weeks before each Annual General Meeting the Council shall cause to be addressed to all Corporate Members of the Institute a notice inviting nominations.
- (B) Nominations may be sent in writing to reach the Chief Executive at the Office not less than eight weeks before the date of the Annual General Meeting. ..."

If the number of nominations exceed the number of places, an election is held. Elected Members become Trustees with effect from the day after the AGM (normally 1 July or very close to that date).

Honorary Officers

It is usually the case that nominations for Honorary Officers are considered by the Nominating Committee and proposed to Council for approval / ratification. In 2024, open calls for nominations were introduced in support of increasing transparency and encouraging interest from the wider membership.

Co-Opted Members

Byelaw 40: The Council may co-opt any Corporate Member to be a member of the Council, provided that at any time the total number of co-opted members shall not exceed six, of whom not more than one shall be an Associate Member, not more than one shall be a Student Member, and not more than one shall be an Affiliate Member.

Byelaw 41. The Council may at any time appoint or co-opt any eligible person to be an Honorary Officer or member of the Council to fill a casual vacancy. In event of the vacancy resulting from an elected member ceasing membership of Council the co-option will cover the period of office outstanding.

The Chair of the ECM is a co-opted member, and they are normally encouraged to stand for election in the year following their co-option to Council.

Responsibilities of the Trustees

The Trustees (Council members) are responsible for preparing the Trustees' Annual Report and the Financial Statements in accordance with applicable law and United Kingdom Accounting Standards (United Kingdom Generally Accepted Accounting Practice).

The Royal Charter of Incorporation and the law applicable to charities in England & Wales requires the Trustees' (Council members) to prepare financial statements for each financial year which give a true and fair view of the state of affairs of the Institute and of the incoming resources and application of resources of the Institute for that period. In preparing these financial statements, the Trustees (Council members) are required to:

- select suitable accounting policies and then apply them consistently;
- observe the methods and principles in the Charities SORP;
- make judgements and estimates that are reasonable and prudent;
- state whether applicable accounting standards have been followed, subject to any material departures disclosed and explained in the financial statements and;
- prepare the financial statements on the going concern basis unless it is inappropriate to presume that the Institute will continue in business.

The Trustees (Council members) are responsible for keeping proper accounting records that disclose with reasonable accuracy at any time the financial position of the Institute and to enable them to ensure that the financial statements comply with the Charities Act 2011, the Charity (Accounts and Reports) Regulations 2008 and the provisions of the Royal Charter of Incorporation. They are also responsible for safeguarding the assets of the Institute and hence for taking reasonable steps for the prevention and detection of fraud and other irregularities.

Byelaw 34 of the Royal Charter states that The Honorary Treasurer, who is a member of Council and the Executive Board and also chairs the Finance Committee, shall be responsible to the Council for the administration of the financial affairs of the Institute and for ensuring that proper accounts are kept in accordance with these Byelaws but may delegate such responsibility to the Chief Executive [Executive Director] who may be assisted by the other salaried staff in the discharge of such responsibility.

The Finance Committee (FC) reviews the IMA budgets and end of financial year accounts and provides reports and recommendations to Council which also approves the accounts at its March meeting following the audit.

The Finance Committee reviews the executive staff's remuneration and pay on an annual basis as part of the budget setting process. In doing so, the committee takes account of the Consumer Price Index (CPI), and benchmarks against other similar sized professional bodies in the UK.

Trustee Expenses

Trustees may claim expenses to cover standard class travel, essential overnight accommodation and subsistence, all of which are set with recommended maximum limits. Private car mileage may be claimed at 0.45p per mile.

Executive Board

The Executive Board is the advisory committee to Council on operational matters and activities which relate to our mission. It consists of all Honorary Officers of Council together with the Equity, Diversity and Inclusion Champion and the senior leadership team of the Secretariat. Selected staff members from the Secretariat are invited to attend as required.

Volunteers

In addition to the Trustees and Honorary Officers, we are fortunate to have volunteers who represent diverse aspects of our membership and the mathematical community, and play an essential role in delivering IMA activities: for example, reviewing membership and professional registration criteria and applications, including professional experience and mathematics-related qualifications; reviewing Journal submissions and abstracts and proposals for IMA scientific conferences; producing mathematical content for *Mathematics Today*, our website and other channels; providing MathCareers website content and judging competition entries; making accreditation assessments, and leading local Branches.

IMA Secretariat

At 31 December 2024, the IMA employed a total of 19 members of staff, including five part-time employees. One post remained vacant. The Secretariat is led by the Executive Director and provides a number of functions in support of the IMA's aims and objectives. The Institute's staff team in 2024 is listed below.

Executive Director – Rosalind Azouzi;
Operations Director – Alan Peacock;

Administration Assistant – Debbie Sullivan;
Administration Officer – Karen Hedderley;
Administration Officer – Emma Emmerton;
Conference and Administration Assistant – Ella Dixon (until July. Position vacant);
Conference and Administration Officer – Pamela Bye;
Conference and Events Executive – Maya Everson;
Editorial Executive – Rebecca Waters;
Education Manager and Project Manager, Scholarships – Vanessa Thorogood;
Education and EDI Officer – Sandra Lieberman (from March to August. New position created);
Governance Manager – Emma-Jane Wheal;
Governance Officer – Stacie Lang;
IT & Systems Executive – Eugene Kidwell;
Marketing Officer – Nikki Barnes;
Membership Assistant – Sabeen Hansraj;
Membership Development and Marketing Executive – Jenny May Roberts;
Membership Officer – Puk Sand-Kristensen (from February);
Membership Manager – Caroline Irwin;
Scholarships Project Officer – Jaydene Merry (until March. Helena Richardson from October);
Special Projects Officer – Joanna Baldacci.

Financial Review 2024

The financial results for 2024 are an unrestricted surplus of £23,900 against a budgeted deficit of £9,616.

The Trustees are happy with the tight cost controls that have kept the performance close to budget, with unexpected income from publications being the driver of the surplus.

At the end of 2024 the total reserves are £1,537,515 of which £127,815 is in relation to restricted reserves. In 2023 the equivalent figure was £1,525,502 of which £139,401 was in relation to restricted reserves.

Funds were used to deliver our charitable aims and objectives. The Trustees have taken into account the Charity Commission's public benefit guidance when carrying out and reporting on activities to which it is relevant. There is clear public benefit in our activities which:

- provide the Chartered Mathematician and Chartered Mathematics Teacher designations and promote professional competence and CPD for registrants;
- set standards for mathematics higher education courses;
- provide local engagement opportunities through our branches;
- facilitate mentoring and peer support;
- create opportunities for public understanding through journals, lectures, conferences, workshops, seminars, podcasts, videos and events;
- demonstrate the ability of mathematics and mathematicians to support decision making, business and public policy;
- inspire the next generation and reverse stereotypes through targeted activities to showcase mathematics and associated career pathways.

A detailed account of our activities is provided in Part One of this report.

Finance Committee, which reports to Council, sets the pay and remuneration of the charity's personnel.

Reserves Policy

The Institute is a charitable organisation that promotes mathematics and its applications. It is a learned society and a professional body where income is principally based on subscriptions, and revenue from conferences and publications. The Institute requires adequate reserves to provide for any shortfall in immediate income and to allow remedial action in event of any long-term adverse change in circumstances. The Institute also requires financial reserves in order to respond to any major opportunities to develop and promote its objectives.

Council considers that reserves equivalent to one year's standard expenditure (excluding large projects which are not part of standard long-term activities) would be an appropriate level.

When Restricted Funds exist, for example the IMA Leslie Fox Fund, those funds will be used for the purpose for which they are restricted. Restricted reserves will not be counted when calculating the amount of reserves for general purposes.

Two months' operating expenses should be held as liquid reserves.

At the end of 2024 the total reserves are £1,537,515 of which £127,815 is in relation to restricted reserves. Therefore, the useable reserve is £1,490,700 which is close to one year's standard expenditure and is therefore deemed to meet this policy.

Sources of funding

Key unrestricted revenue streams were:

Publications	£649,271
Membership Subscriptions	£370,668
Conference Income	£52,763

Some of our most significant expenditure on charitable activities during the year were:

Promoting Maths	£458,737
Education	£31,773

Maths Today	£187,386
Conference Expenditure	£185,010
Grants	£58,675

The expenditure of our incoming resources on these charitable activities was fully in line with our charitable objectives.

The non-current reserves of the Institute on 31/12/2024 were held with the following Finance Organisations: £110,115 is held at the Charity Bank, £220,459 at the Clydesdale Bank, £318,741 at Shawbrook Bank, and £1,109,707 at Lloyds; and £109,815 at Lloyds held on behalf of the Leslie Fox Prize and QJMAM.

Free reserves

At the end of 2024, free reserves were £1,312,856 (2023: £1,290,253).

Management of Risks

Council has delegated the oversight of risk to the Finance Committee in the first instance.

The Finance Committee assesses risk annually at a minimum, or more frequently in periods of economic or other uncertainties. Operationally, risks are under constant scrutiny by the senior management team, and any risk 'events' are reported via established processes.

The Risk Register is managed by the Governance Manager with input from the senior leadership team and other subject matter experts. The Risk Register is divided into the following categories:

- People, Leadership and Culture
- Financial
- Governance & Risk (including Data/GDPR)
- Operational Risk (including IT Resilience, Change Management & Procurement)

Risks are assessed on both an inherent and residual basis, and based on risk appetite, the top risks are reported at a senior level, along with the control environment that they operate in.

In 2024, the key areas of risks under scrutiny could be summarised as follows:

- IT Risk – Cybersecurity
The protection of member and staff data is of utmost importance to the IMA. Due to the prevalence of cybersecurity risk across all sectors, and the impact a breach of our security may have, we foresee this risk remaining a focus for some time.
- Governance – Regulatory Compliance
Compliance with our Royal Charter, Charity Commission requirements such as Conflicts of Interest, GDPR and other external regulations is core to our culture; the oversight and reporting of all aspects of this risk is kept under constant scrutiny.
- Financial Sustainability
Compliance with our Royal Charter, the Charity Commission requirements and IMA Accounting and Investment policies, including meeting reserves and 'going concern' obligations.
- Reputational Risk
The materialisation of any risk has the potential to damage the IMA's reputation, and this drives our focus on risk management. Further to that, we have our codes of professional conduct for all members which is made by the Council in line with the Royal Charter.

There were no material risk events reported within the accounting period 1 January – 31 December 2024.

Notes to the Financial Statements for the year ended 31 December 2024

The accounts given on pages 47-54 provide the IMA's full, formal financial statements and accounting policies.

This Trustees' Report 2024, incorporating the IMA's annual report to members, was approved by the Trustees at the Council meeting of March 2025.

On behalf of the Trustees

A handwritten signature in black ink, appearing to read 'Hannah Fry', written in a cursive style.

President Professor Hannah Fry FREng FIMA

INSTITUTE OF MATHEMATICS AND ITS APPLICATIONS

INDEPENDENT AUDITOR'S REPORT

TO THE TRUSTEES OF THE INSTITUTE OF MATHEMATICS AND ITS APPLICATIONS

Opinion

We have audited the financial statements of Institute of Mathematics and Its Applications (the 'charity') for the year ended 31 December 2024 which comprise the statement of financial activities, the balance sheet, the statement of cash flows and notes to the financial statements, including significant accounting policies. The financial reporting framework that has been applied in their preparation is applicable law and United Kingdom Accounting Standards, including Financial Reporting Standard 102 *The Financial Reporting Standard applicable in the UK and Republic of Ireland* (United Kingdom Generally Accepted Accounting Practice).

In our opinion, the financial statements:

give a true and fair view of the state of the charity's affairs as at 31 December 2024 and of its incoming resources and application of resources, for the year then ended;

have been properly prepared in accordance with United Kingdom Generally Accepted Accounting Practice; and

have been prepared in accordance with the requirements of the Charities Act 2011.

Basis for opinion

We conducted our audit in accordance with International Standards on Auditing (UK) (ISAs (UK)) and applicable law. Our responsibilities under those standards are further described in the Auditor's responsibilities for the audit of the financial statements section of our report. We are independent of the charity in accordance with the ethical requirements that are relevant to our audit of the financial statements in the UK, including the FRC's Ethical Standard, and we have fulfilled our other ethical responsibilities in accordance with these requirements. We believe that the audit evidence we have obtained is sufficient and appropriate to provide a basis for our opinion.

Conclusions relating to going concern

In auditing the financial statements, we have concluded that the use of the going concern basis of accounting in the preparation of the financial statements is appropriate.

Based on the work we have performed, we have not identified any material uncertainties relating to events or conditions that, individually or collectively, may cast significant doubt on the charity's ability to continue as a going concern for a period of at least twelve months from when the financial statements are authorised for issue.

Our responsibilities and the responsibilities of the trustees with respect to going concern are described in the relevant sections of this report.

Other information

The other information comprises the information included in the annual report other than the financial statements and our auditor's report thereon. The trustees are responsible for the other information contained within the annual report. Our opinion on the financial statements does not cover the other information and we do not express any form of assurance conclusion thereon. Our responsibility is to read the other information and, in doing so, consider whether

the other information is materially inconsistent with the financial statements or our knowledge obtained in the course of the audit, or otherwise appears to be materially misstated. If we identify such material inconsistencies or apparent material misstatements, we are required to determine whether this gives rise to a material misstatement in the financial statements themselves. If, based on the work we have performed, we conclude that there is a material misstatement of this other information, we are required to report that fact.

We have nothing to report in this regard.

Matters on which we are required to report by exception

We have nothing to report in respect of the following matters in relation to which the Charities (Accounts and Reports) Regulations 2008 require us to report to you if, in our opinion:

- the information given in the Trustees' annual report is inconsistent in any material respect with the report; or

INSTITUTE OF MATHEMATICS AND ITS APPLICATIONS

INDEPENDENT AUDITOR'S REPORT

TO THE TRUSTEES OF THE INSTITUTE OF MATHEMATICS AND ITS APPLICATIONS

- the financial statements are not in agreement with the accounting records; or
- we have not received all the information and explanations we require for our audit.

Responsibilities of trustees

As explained more fully in the statement of trustees' responsibilities, the trustees are responsible for the preparation of the financial statements and for being satisfied that they give a true and fair view, and for such internal control as the trustees determine is necessary to enable the preparation of financial statements that are free from material misstatement, whether due to fraud or error. In preparing the financial statements, the trustees are responsible for assessing the charity's ability to continue as a going concern, disclosing, as applicable, matters related to going concern and using the going concern basis of accounting unless the trustees either intend to cease operations, or have no realistic alternative but to do so.

Auditor's responsibilities for the audit of the financial statements

We have been appointed as auditor under section 144 of the Charities Act 2011 and report in accordance with the Act and relevant regulations made or having effect thereunder.

Our objectives are to obtain reasonable assurance about whether the financial statements as a whole are free from material misstatement, whether due to fraud or error, and to issue an auditor's report that includes our opinion. Reasonable assurance is a high level of assurance but is not a guarantee that an audit conducted in accordance with ISAs (UK) will always detect a material misstatement when it exists. Misstatements can arise from fraud or error and are considered material if, individually or in the aggregate, they could reasonably be expected to influence the economic decisions of users taken on the basis of these financial statements.

The extent to which our procedures are capable of detecting irregularities, including fraud, is detailed below.

We identified areas of laws and regulations that could reasonably be expected to have a material effect on the financial statements from our: general commercial and sector experience; through verbal and written communications with those charged with governance and other management; through communications with legal counsel, and via inspection of the charity's regulatory and legal correspondence.

We discussed with those charged with governance and other management the policies and procedures regarding compliance with laws and regulations.

We communicated identified laws and regulations to our team and remained alert to any indicators of non-compliance throughout the audit, we also specifically considered where and how fraud may occur within the charitable company.

The potential effect of these laws and regulations on the financial statements varies considerably.

Firstly, the charity is subject to laws and regulations that directly affect the financial statements, including: the charity's constitution; relevant financial reporting standards; company law; the Statement of Recommended Practice applicable to charities preparing their accounts in accordance with FRS 102 (effective from 1 January 2019); and we assess the extent of compliance with these laws and regulations as part of our procedures on the related financial statement items.

Secondly the charity is subject to many other laws and regulations where the consequences of non-compliance could have a material effect on the amounts or disclosures in the financial statements, for instance through the imposition of fines and penalties, or through losses arising from litigations. We identified the following areas as those most likely to have such an affect: legislation directly applicable to charities sector such as the Charities Act 2011, employment legislation; health and safety legislation; the regulatory requirements of the Charity Commission; data protection legislation; anti-bribery and anti-corruption legislation.

International Auditing Standards (UK) limit the required procedures to identify non-compliance with these laws and regulations to the procedures, and no procedures over and above those already noted are required. These limited procedures did not identify any actual or suspected non-compliance with laws and regulations that could have a material impact on the financial statements.

INSTITUTE OF MATHEMATICS AND ITS APPLICATIONS

INDEPENDENT AUDITOR'S REPORT

TO THE TRUSTEES OF THE INSTITUTE OF MATHEMATICS AND ITS APPLICATIONS

In relation to fraud, we performed the following specific procedures in addition to those already noted:

- Challenging assumptions made by management in its significant accounting estimates in particular: depreciation and accrued income;
- Identifying and testing journal entries, in particular any entries posted with unusual nominal ledger account combinations, journal entries posted by senior management, journal entries crediting cash or any revenue account and large year end journals;
- Performing analytical procedures to identify unexpected movements in account balances which may be indicative of fraud;
- Ensuring that testing undertaken on both the Statement of Financial Activity (SoFA) and the Balance Sheet includes a number of items selected on a random basis;

These procedures did not identify any actual or suspected fraudulent irregularity that could have a material impact on the financial statements.

Owing to the inherent limitations of an audit, there is an unavoidable risk that we may not have detected some material misstatements in the financial statements, even though we have properly planned and performed our audit in accordance with International Auditing Standards (UK). For example, the further removed non-compliance with laws and regulations is from the events and transactions reflected in the financial statements, the less likely the procedures that we are required to undertake would identify it. In addition, as with any audit, there remains a high risk of non-detection of irregularities, as these might involve collusion, forgery, intentional omissions, misrepresentation, or the override of internal controls. We are not responsible for preventing non-compliance with laws and regulations or fraud, and cannot be expected to detect non-compliance with all laws and regulations or every incidence of fraud.

A further description of our responsibilities is available on the Financial Reporting Council's website at: <https://www.frc.org.uk/auditorsresponsibilities>. This description forms part of our auditor's report.

Use of our report

This report is made solely to the charity's trustees, as a body, in accordance with part 4 of the Charities (Accounts and Reports) Regulations 2008. Our audit work has been undertaken so that we might state to the charity's trustees those matters we are required to state to them in an auditor's report and for no other purpose. To the fullest extent permitted by law, we do not accept or assume responsibility to anyone other than the charity and the charity's trustees as a body, for our audit work, for this report, or for the opinions we have formed.

Rickard Luckin Limited

Chartered Accountants 1st Floor

Statutory Auditor County House
100 New London Road
Chelmsford
Essex
CM2 0RG

FINANCIAL STATEMENTS

Financial Statement of Activities 31 December 2024

THE INSTITUTE OF MATHEMATICS AND ITS APPLICATIONS

STATEMENT OF FINANCIAL ACTIVITIES INCLUDING THE INCOME AND EXPENDITURE ACCOUNT FOR THE YEAR ENDED 31 DECEMBER 2024

	Unrestricted Funds 2024 £	Restricted Funds 2024 £	Total Funds 2024 £	Unrestricted Funds 2023 £	Restricted Funds 2023 £	Total Funds 2023 £	Notes
Income and endowments from:							
<i>Donations and legacies</i>							
Appeal Fund, Donations and Bequests	1,155	23,000	24,155	38	0	38	
<i>Charitable activities</i>							
Member Entrance fees	8,420	0	8,420	2,545	0	2,545	
C. Math/C Math Teacher Member Entrance fees	0	0	0	580	0	580	
Member Subscription fees	370,668	0	370,668	351,722	0	351,722	
Conference and symposium fees	52,763	0	52,763	96,629	0	96,629	
Publications income and Institutional subscriptions	649,271	0	649,271	548,405	100,000	648,405	
Donations	0	0	0	12,135	0	12,135	
Scholarships	0	167,167	167,167	0	145,098	145,098	14
Investment Income	23,452	1,986	25,438	9,584	874	10,458	16
Total	1,105,729	192,153	1,297,882	1,021,638	245,972	1,267,610	
Expenditure on:							
<i>Charitable Activities</i>							
Branches and groups	5,377	0	5,377	4,746	0	4,746	
Conferences	185,010	0	185,010	195,587	0	195,587	
Education	31,773	0	31,773	29,225	0	29,225	
Grants/Donations	58,675	0	58,675	66,932	0	66,932	
Promoting Mathematics (including Scholarships)	286,570	172,167	458,737	238,071	145,098	383,169	1c
Mathematics Today	187,386	0	187,386	165,197	0	165,197	
Membership	144,071	0	144,071	123,187	0	123,187	
Professional development	66,624	0	66,624	57,015	0	57,015	
Other publications	32,346	31,572	63,918	39,766	35,021	74,787	
Governance	83,998	0	83,998	97,172	0	97,172	1d
Total	1,081,829	203,739	1,285,568	1,016,898	180,119	1,197,017	1a
Net movement in funds	23,900	(11,586)	12,314	4,740	65,853	70,593	
Reconciliation of funds							
Total Funds brought forward at 1 January 2024	1,385,801	139,401	1,525,202	1,381,061	73,548	1,454,609	
Total Funds carried forward at 31 December 2024	1,409,700	127,815	1,537,515	1,385,801	139,401	1,525,202	

The net movement in funds arises from the charity's continuing operations.

FINANCIAL STATEMENTS

Balance Sheet

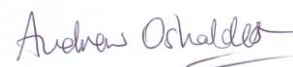
BALANCE SHEET AS AT 31 DECEMBER 2024

	2024 £	2023 £	Notes
FIXED ASSETS			
Tangible assets	96,844	95,548	2
	<u>96,844</u>	<u>95,548</u>	
CURRENT ASSETS			
Stock	858	4,842	3
Debtors	60,952	35,799	4
Current asset investments	672,192		17
Cash at bank and in hand	1,196,644	1,838,960	17
	<u>1,930,647</u>	<u>1,879,601</u>	
LIABILITIES			
Creditors: amounts falling due within one year	489,977	449,947	
	<u>489,977</u>	<u>449,947</u>	5
NET CURRENT ASSETS	<u>1,440,671</u>	<u>1,429,654</u>	
TOTAL ASSETS LESS CURRENT LIABILITIES	<u>1,537,515</u>	<u>1,525,202</u>	
Creditors: amounts falling due after one year	0	0	
TOTAL NET ASSETS	<u>1,537,515</u>	<u>1,525,202</u>	8
FUNDS			
Restricted income funds	127,815	139,401	
Unrestricted income funds:			
General funds	1,406,472	1,385,801	
Designated Funds	3,227		
TOTAL CHARITY FUNDS	<u>1,537,515</u>	<u>1,525,202</u>	7

The Financial Statements together with the Trustees' Annual Report (2024) were approved and authorised for issue by the Council on 26 March 2025 and signed on their behalf by

PROFESSOR ANDREW OSBALDESTIN

Honorary Treasurer



PROFESSOR HANNAH FRY

President



FINANCIAL STATEMENTS

Cash Flows

STATEMENT OF CASH FLOWS FOR THE YEAR ENDED 31 DECEMBER 2024	2024 £	2023 £	Notes
Net Cash (used in)/provided by:			
Operating activities	<u>15,367</u>	<u>108,175</u>	15
Investing activities	25,438	10,458	16
Financing activities	(10,928)	(10,842)	
Cash flow for the period	<u>29,877</u>	<u>107,791</u>	
Opening cash and cash equivalents;	1,838,960	1,731,169	
Closing cash and cash equivalents	<u><u>1,868,837</u></u>	<u><u>1,838,960</u></u>	
	0	0	

The Institute of Mathematics and its Applications

Financial Statements for the Year Ended 31 December 2024

ACCOUNTING POLICIES

Basis Of Accounting

The financial statements have been prepared in accordance with Accounting and Reporting by Charities: Statement of Recommended Practice applicable to charities preparing their accounts in accordance with the Financial Reporting Standard in the UK and Republic of Ireland (FRS102) (Charities SORP (FRS102)) as updated by the Charities SORP (FRS 102).

The charity has elected to apply the provisions of Section 11 'Basic Financial Instruments' and Section 12 'Other Financial Instruments Issues' of FRS 102 to all of its financial instruments. Financial instruments are recognised in the charity's balance sheet when the charity becomes party to the contractual provisions of the instrument.

Financial assets and liabilities are offset, with the net amounts presented in the financial statements, when there is a legally enforceable right to set off the recognised amounts and there is an intention to settle on a net basis or to realise the asset and settle the liability simultaneously.

Incoming Resources

All incoming resources are included in the Statement of Financial Activities when the charity is legally entitled to the income and the amounts can be quantified with reasonable accuracy. The following specific policies are applied to particular categories of income:

- Investment income is included on receipt;
- Incoming resources from publications and conferences are accounted in the period in which services are provided;
- Subscriptions are recognised over the period to which the fees relate;
- Scholarship income is recognised on a performance basis.
- Income from donations or grants is recognised when there is evidence of entitlement to the gift, receipt is probable and its amount can be measured reliably.

To the extent that reliable estimations are available with regard to the final settlement of each accounting year's publication income and expenditure, provision is made for the final settlement figure. Where reliable estimations are not available, no provision is made.

Funds Structure

Unrestricted funds comprise those funds which the Trustees are free to use in accordance with the charitable objects. Restricted funds are funds which have been given for particular purposes and projects (see note 7).

Designated funds are unrestricted funds earmarked by the Trustees for particular purposes.

Resources Expended

Resources expended are recognised in the period in which they are incurred and include attributable Input VAT that cannot be recovered. Resources expended are allocated to the particular activity where the cost relates directly to that activity.

Governance costs include the costs of governance arrangements that relate to the general running of the charity. These activities provide the governance infrastructure that allows the charity to operate and to generate the information required for public accountability. They include the strategic planning processes that contribute to the future development of the charity.

Direct expenditure is allocated to categories of activity. Where expenditure cannot be directly allocated it represents support costs and is apportioned on a basis consistent with the use of resources, by reference to the % allocation of staff working on each activity.

The Institute makes grants and donations to members of the mathematics community. The purpose of the grants and donations is to facilitate research activity in all areas of mathematics.

Government Grants

Government grants are recognised at the fair value of the asset received or receivable when there is reasonable assurance that the grant conditions will be met and the grants will be received. A grant that specifies performance conditions is recognised in income when the performance conditions are met. Where a grant does not specify performance conditions it is recognised in income when the proceeds are received or receivable. A grant received before the recognition criteria are satisfied is recognised as a liability.

Branches

The Statement of Financial Activities represents the results of the charity only. The Institute has seven current branches and these are not consolidated on the basis they are not material to the charity.

Tangible Fixed Assets

Depreciation is provided on all tangible fixed assets other than freehold land at rates calculated to write each asset down to its estimated residual value evenly over its expected useful life, as follows: -

Freehold buildings 2%

Fixtures, fittings and equipment 15%

Computer equipment 33%

Following the implementation of FRS 102, the charity has followed the transitional provisions to retain the book value of freehold buildings re-valued on 31 December 1991, but not to adopt a policy of revaluation in the future.

Stock

Stocks are stated at the lower of cost and estimated selling price less costs to complete and sell. Cost comprises direct materials and, where applicable, direct labour costs and those overheads that have been incurred in bringing the stocks to their present location and condition. Items held for distribution at no or nominal consideration are measured the lower of replacement cost and cost.

Basic Financial Assets

Basic financial assets, which include debtors and cash and bank balances, are initially measured at transaction price including transaction costs and are subsequently carried at amortised cost using the effective interest method unless the arrangement constitutes a financing transaction, where the transaction is measured at the present value of the future receipts discounted at a market rate of interest. Financial assets classified as receivable within one year are not amortised.

Cash at Bank

Current asset investments are investments which a charity holds for resale or pending their sale and cash or cash equivalents with a maturity date of less than one year. This heading includes cash on deposit and cash equivalents with a maturity of less than one year held for investment purposes rather than to meet short-term cash commitments as they fall due.

Basic Financial Liabilities

Basic financial liabilities, including creditors, are initially recognised at transaction price unless the arrangement constitutes a financing transaction, where the debt instrument is measured at the present value of the future payments discounted at a market rate of interest. Financial liabilities classified as payable within one year are not amortised.

Debt instruments are subsequently carried at amortised cost, using the effective interest rate method.

Trade creditors are obligated to pay for goods or services that have been acquired in the ordinary course of operations from suppliers. Amounts payable are classified as current liabilities if payment is due within one year or less. If not, they are presented as non-current liabilities. Trade creditors are recognised initially at transaction price and subsequently measured at amortised cost using the effective interest method.

Pensions

The Institute operates a defined contribution scheme. The amount charged to the Statement of Financial Activities in respect of pension costs and other post retirement benefits are the contributions incurred in the year.

Judgements and Estimates

In preparing financial statements it is necessary to make certain judgements, estimates and assumptions that affect the amounts recognised in the financial statements. The following judgements and estimates are considered by the Trustees to have the most significant effect on amounts recognised in the financial statements:

- Depreciation and amortisation charges are based on the estimated useful life of the assets held.
- Publication income is based on the budgeted royalty commission from the OUP.

Notes to the Financial Statements

The Institute of Mathematics and its Applications

NOTES TO THE FINANCIAL STATEMENTS FOR THE YEAR ENDED 31 DECEMBER 2024

1.Expenditure on:	2024				2023				Notes
	Support	Direct	Staff	Total	Support	Direct	Staff	Total	
a) Analysis of expenditure on	Costs	Costs	Costs	Costs	Costs	Costs	Costs	Costs	
<u>Unrestricted funds</u>	£	£	£	£				£	
Operating activities in furtherance of Charity's objectives									
Branches and groups	951	1,238	3,187	5,377	622	1,279	2,845	4,746	
Conferences	32,135	45,212	107,663	185,010	20,998	78,491	96,098	195,587	
Education	6,871	1,719	23,183	31,773	4,490	4,188	20,547	29,225	
Grants/donations	5,819	41,169	11,687	58,675	2,279	54,221	10,432	66,932	1e
Promoting Mathematics	59,830	26,288	200,451	286,570	35,051	24,101	178,919	238,071	1c
Mathematics Today	26,955	70,121	90,309	187,386	17,614	66,975	80,608	165,197	
Membership	31,289	7,952	104,830	144,071	20,446	9,172	93,569	123,187	
Professional development	14,482	3,623	48,519	66,624	9,463	4,245	43,307	57,015	
Other publications	5,180	9,812	17,354	32,346	3,385	20,892	15,489	39,766	
Governance	8,139	48,589	27,270	83,998	5,319	67,512	24,341	97,172	1d
Total unrestricted resources expended	191,652	255,723	634,454	1,081,829	119,667	331,076	566,155	1,016,898	1b

Restricted funds

Operating activities in furtherance of Charity's objectives									
QJMAM	0	31,572	0	31,572	0	33,400	0	33,400	
Scholarships	22,093	71,219	73,855	167,167	18,481	60,550	66,067	145,098	
Mathematics Today (Leslie Fox Prize Fund award)	0	0	0	0	0	1,621	0	1,621	
Levelling up	0	5,000	0	5,000					
Total resources expended	213,745	363,514	708,309	1,285,568	138,148	426,647	632,222	1,197,017	

b) Analysis of Total Support Costs	Conferences	Education	Maths	Membership	Governance	Other	Total
<u>Unrestricted funds</u>	£	£	£	£	£	£	£
DMH premises V18 Nelson Street	833	178	698	811	211	2,747	5,477
Communications & IT	7,856	1,680	6,590	7,649	1,990	25,920	51,685
Postage & printing	991	212	832	965	251	3,271	6,522
Financial costs	20,991	6,819	17,607	20,439	5,317	69,256	140,429
Depreciation	1,464	313	1,228	1,426	371	4,830	9,632
Total unrestricted	32,135	9,202	26,955	31,289	8,139	106,024	213,745

	2024	2023
	£	£
Conferences	32,135	20,999
Education	9,202	4,490
Mathematics Today	26,955	17,614
Membership	31,289	20,446
Governance	8,139	5,319
Other	106,024	69,281
	<u>213,745</u>	<u>138,148</u>

Notes to the Financial Statements

The Institute of Mathematics and its Applications

NOTES TO THE FINANCIAL STATEMENTS FOR THE YEAR ENDED 31 DECEMBER 2024

c) Analysis of promoting mathematics costs

	2024				2023			
	Support Costs	Direct Costs	Staff Costs	Total	Support Costs	Direct Costs	Staff Costs	Total
	£	£	£	£	£	£	£	£
Maths Careers	5,391	7,868	18,062	31,321	3,523	6,366	16,122	26,011
Other (including Levelling up)	54,439	23,420	182,390	260,249	31,529	17,735	162,797	212,061
Total promoting mathematics costs	59,830	31,288	200,451	291,570	35,052	24,101	178,919	238,072
Scholarships	22,093	71,219	73,855	167,167	18,481	60,550	66,067	145,098
	<u>81,923</u>	<u>102,507</u>	<u>274,307</u>	<u>458,736</u>	<u>53,533</u>	<u>84,651</u>	<u>244,986</u>	<u>383,170</u>

Maths Careers is only supported by the Institute of Mathematics and its Applications.

d) Analysis of governance costs

	2024				2023			
	Support Costs	Direct Costs	Staff Costs	Total	Support Costs	Direct Costs	Staff Costs	Total
	£	£	£	£	£	£	£	£
Audit fees - Audit of Financial Statements	0	16,150	0	16,150	0	14,500	0	14,500
Legal and professional	0	-3,358	0	-3,358	0	2,386	0	2,386
Irrecoverable VAT	0	0	0	0	0	0	0	0
Strategy Review Weekend	0	0	0	0	0	18,912	0	18,912
Cost of AGM and Trustee travel etc.	0	35,797	0	35,797	0	31,714	0	31,714
Apportionment of staff costs	0	0	27,270	27,270	0	0	24,341	24,341
General overhead costs	8,139	0	0	8,139	5,319	0	0	5,319
Total governance costs	<u>8,139</u>	<u>48,589</u>	<u>27,270</u>	<u>83,998</u>	<u>5,319</u>	<u>67,512</u>	<u>24,341</u>	<u>97,172</u>

e) Analysis of grants expended

	2024	2023
	Total	Total
	£	£
Educational Grants	0	2,174
Small Grants	17,799	14,282
University Liaison Officer Grants	3,790	3,568
CMS	19,579	19,510
	<u>41,169</u>	<u>39,533</u>
	<u>0</u>	<u>0</u>
	<u>41,169</u>	<u>39,533</u>

See in the Trustees Annual Report where details are given for Educational Grants, Small Grants & University Liaison Officer Grants. The grants are payable to individuals £0 and institutions £21,589 and £19,579 to CMS

Notes to the Financial Statements

The Institute of Mathematics and its Applications

NOTES TO THE FINANCIAL STATEMENTS FOR THE YEAR ENDED 31 DECEMBER 2024

2. TANGIBLE FIXED ASSETS

	Freehold property & land	Fixtures fittings & equipment	TOTAL
Cost or valuation:	£	£	£
Property 1 January 2024	236,200	172,903	409,103
Additions	0	10,928	10,928
Disposals	0	(12,037)	(12,037)
31 December 2024	<u>236,200</u>	<u>171,794</u>	<u>407,994</u>
Depreciation			
1 January 2024	147,231	166,324	313,555
Charged in the year	4,363	5,269	9,632
Disposals	0	(12,037)	(12,037)
31 December 2024	<u>151,594</u>	<u>159,557</u>	<u>311,150</u>
Net book value:			
31 December 2024	<u>84,606</u>	<u>12,237</u>	<u>96,844</u>
31 December 2023	<u>88,969</u>	<u>6,579</u>	<u>95,548</u>

Notes to the Financial Statements

The Institute of Mathematics and its Applications

NOTES TO THE FINANCIAL STATEMENTS FOR THE YEAR ENDED 31 DECEMBER 2024

3. STOCKS	2024	2023
	£	£
Goods for resale	<u>858</u>	<u>4,842</u>

4. DEBTORS	2024	2023
	£	£
Due within one year:		
Trade debtors	0	546
Prepayments and accrued income	<u>60,952</u>	<u>35,253</u>
	<u>60,952</u>	<u>35,799</u>

5. CREDITORS	2024	2023
	£	£
Amounts falling due within one year:		
Trade creditors	17,991	3,986
Other taxation and social security costs	110,963	60,073
Accruals and Deferred Income	<u>361,023</u>	<u>385,888</u>
	<u>489,977</u>	<u>449,947</u>

6. Deferred Income	2024	2023
	£	£
Deferred income b/fwd.	358,461	312,408
Amounts released	(358,461)	(312,408)
Deferred in year	<u>337,371</u>	<u>358,461</u>
Deferred income c/fwd	<u>337,371</u>	<u>358,461</u>

Deferred income mainly consists of publishing and membership income relating to 2025 and will therefore be released next year.

7. MOVEMENTS IN FUNDS

	2024			Transfer	2023	
	£	Incoming resources	Resources expended	between funds	£	£
Restricted reserves						
Scholarships	0	167,167	(167,167)	0	0	0
Leslie Fox Prize Fund	3,438	1,986	0	0	1,452	0
Levelling Up	18,000	23,000	(5,000)	0	0	0
QJMAM	<u>106,377</u>	<u>0</u>	<u>(31,572)</u>	<u>0</u>	<u>137,949</u>	<u>139,401</u>
	<u>127,815</u>	<u>192,153</u>	<u>(203,739)</u>	<u>0</u>	<u>139,401</u>	<u>139,401</u>
Unrestricted funds						
Unrestricted Reserves	1,406,474	1,105,729	(1,081,829)	(3,227)	1,385,801	1,385,801
Designated Funds						
IMA Foundation	<u>3,227</u>	<u>0</u>	<u>0</u>	<u>3,227</u>	<u>0</u>	<u>0</u>
	<u>1,409,701</u>	<u>1,105,729</u>	<u>(1,081,829)</u>	<u>0</u>	<u>1,385,801</u>	<u>1,385,801</u>
Total restricted and unrestricted funds	<u>1,537,515</u>	<u>1,297,882</u>	<u>(1,285,568)</u>	<u>0</u>	<u>1,525,202</u>	<u>1,525,202</u>

QJMAM funds are held to provide grant awards to applicants that are successful in submitting papers included in the QJMAM journal

The Scholarships funds are spent on the administration and events surrounding the DFE maths teacher scholarships scheme

The Leslie Fox Prize Fund may be used to award biennially for best submission in Numerical Analysis.

The Levelling Up funds consist of donations received in 2024 which the IMA to spend on Levelling Up projects in 2025

The proceeds made from the IMA 60th Anniversary event have been ringfenced by IMA to support the foundation. More details on the foundation can be found in the annual report.

Notes to the Financial Statements

The Institute of Mathematics and its Applications

NOTES TO THE FINANCIAL STATEMENTS FOR THE YEAR ENDED 31 DECEMBER 2024

8. ANALYSIS OF NET ASSETS BETWEEN FUNDS

	Tangible fixed assets	Net current assets	Fund balance balance
	£	£	£
Unrestricted funds	96,844	1,312,857	1,409,700
Restricted funds	0	127,815	127,815
	<u>96,844</u>	<u>1,440,672</u>	<u>1,537,515</u>

9. PENSION COSTS

The Institute makes payments to personal pension funds set up by individual members of staff. Contributions payable by the Institute amounted to £59,729 (2023: £48,746).

10. EMPLOYEES

The following number of employees received employee benefits (excluding employer pension costs) during the year between:

	2024	2023
£70,001 - £80,000	0	1
£80,001 - £90,000	1	0

The total employee benefits including pension contributions of the key management personnel were £153,383 (2023 - £149,612).

11. STAFF NUMBERS

The average weekly number of persons employed by the Institute regardless of whether they are part time or full time during the year was:

Administration:	15	15
Management:	2	2
Scholarships	2	2
	<u>19</u>	<u>19</u>

	2024	2023
	£	£
Staff costs for the above persons:		
Salaries	589,037	524,569
Pension contributions	58,516	54,082
Social security costs	51,103	44,202
Other costs	9,653	9,369
	<u>708,309</u>	<u>632,222</u>

Notes to the Financial Statements

The Institute of Mathematics and its Applications

NOTES TO THE FINANCIAL STATEMENTS FOR THE YEAR ENDED 31 DECEMBER 2024

12. TAXATION

The Institute is accepted by HM Revenue & Customs as an educational charity and as such is not subject to corporate taxation for activities within its charitable objects.

13. RELATED PARTY TRANSACTIONS

During the year £617 was paid to Dr Snezana Lawrence in relation to services were provided to the institute (2023 £434 relating to services provided by Dr Snezana Lawrence). No trustees received any remuneration from employment with the charity.

In addition, re-imbursed expenses for travel and subsistence to Council Members amounted to £6,233, 12 members re-imbursed (2023: £6,266, 13 members re-imbursed).

14. SCHOLARSHIPS

In 2012 the Teaching Agency approached the IMA to run a Mathematics Initial Teacher Training Scholarship Scheme.

Under such a scheme the institute would be paid by the DFE (for England only) to run the Scheme. In 2012 costs associated with the negotiation were borne by the IMA. In addition DFE paid for a small grant to develop the submission.

DFE announced on 21st December 2012 that the Scheme would be run. The amounts awarded by the DFE were as follows:

Year	Award
2020	128,053
2021	119,920
2022	103,579
2023	143,028
2024	167,167

15. Reconciliation of net movement in funds to net cash flow from operating activities

	2024	2023
	Total	Total
	£	£
Net movement in funds	12,314	70,593
Add back depreciation	9,632	8,831
Deduct investment income	(25,438)	(10,458)
Decrease/(increase) in stock	3,984	(0)
Decrease/(increase) in debtors	(25,153)	5,121
(Decrease)/increase in creditors	40,030	34,087
Net cash provided by/(used in) operating activities	<u>15,367</u>	<u>108,175</u>

16. INVESTMENT INCOME

	2024	2023
	Total	Total
	£	£
Interest on cash deposits	25,438	10,458

Investment income includes £1,986 (2023 £874) in respect of restricted funds.

17. ANALYSIS OF CHANGES IN NET DEBT

	As at 1 Jan 2024	Cash flows	other non- cash changes	As at 31 Dec 2024
Cash	1,838,960	29,877	-	1,868,837
Loans falling due within one year	0	-	-	-
Loans falling due after one year	0	-	-	-
Balance at the end of the year	<u>1,838,960</u>	<u>29,877</u>	<u>0</u>	<u>1,868,837</u>

PART THREE:

External Links and Partnerships

External Links and Partnerships

Representatives from the IMA's membership and/or staff team work closely with a number of external bodies at UK, European and International level, in support of our charitable objectives: to raise public awareness and understanding of mathematics, STEM and its impact on society, advising on issues such as mathematics teaching and learning and the applications of mathematics to societal challenges.

Academy for the Mathematical Sciences

The Academy for the Mathematical Sciences (AcadMathSci) was established by the mathematical community in response to the 2018 Bond Review and follow-on consultation activities across the community and aims to provide a single voice for mathematics.

AcadMathSci formalised its governance arrangements over 2023-4. DSIT opened a consultation process regarding Government funding for a national academy for mathematical sciences. The IMA provided a comprehensive response to the consultation and members attended roundtable sessions. A tender process was subsequently opened but unfortunately due to the UK General Election, DSIT funding was withdrawn in the Autumn. However the Academy has since continued to work with the IMA and other learned societies through CMS to develop its plans and secure alternative sources of funding to achieve its aims.

Professor Dame Alison Etheridge DBE OBE FRS FIMA was appointed inaugural President of the Academy in 2024.

Alliance for Data Science Professionals

The IMA joined the AfDSP in 2020 to support the development of professional frameworks for those working in data standards fields. Other Alliance members are the RSS, ORS and BCS, National Physical Laboratory (NPL) and the Alan Turing Institute. The Alliance is committed to:

Defining the standards of professional competence and behaviour expected of people who work with data which impacts lives and livelihoods. These currently include data scientists, data engineers, data analysts and data stewards.

Delivering these standards as data science certifications offered by the Alliance members to their professional members, with processes to hold certified members accountable for their professional status in this area.

Using these standards as criteria for Alliance members to accredit data science degrees, and data science modules of associated degrees, as contributing to certification.

2024 saw further applications via the IMA to achieve Data Science Professional status. An additional framework to accredit data science related degrees was approved and trialled with universities. The RSS submitted an application to the Privy Council to make the Advanced Data Professional and Data Science Professional standards a Chartered and Registered designation respectively. Privy Council decision is anticipated in 2025.

IMA representatives: Professor Paul Glaister CBE CMath CSci FIMA (IMA Honorary Secretary – Membership, University of Reading); Rosalind Azouzi (Executive Director); Caroline Irwin (Membership Manager); Emma Emmerton (Corporate Services Executive)

Campaign for Mathematical Sciences

The IMA is a member of the Campaign for Mathematical Sciences (CaMS), founded in 2021 as Protect Pure Maths (PPM), whose mission is to advance the mathematical sciences for discovery, innovation and the economy, achieved by supporting engagement and providing specialist advice in maths policy.

CaMS represents the whole mathematical sciences community and is managed by the London Mathematical Society. The membership includes representation from all the UK's mathematical societies, as well as the new Academy for the Mathematical Sciences.

The Campaign's Mathematical Degrees for the Future (MDF) programmes has recently awarded grants of up to £500,000 each to universities who have been successful in bidding for projects to develop undergraduate programmes to provide the mathematical knowledge and skills students will need over the next 10 years, for the benefit of academia, industry and/or teaching.

Professor Paul Glaister CBE CMath CSci FIMA is the IMA's member of the Advisory Group and Steering Group of CaMS, and a member of the Selection and Awarding Panel for the Mathematical Degrees for the Future Programme.

Council for the Mathematical Sciences (CMS)

Professor Dame Alison Etheridge DBE OBE FRS FIMA chaired CMS in 2024 until becoming President of AcadMathSci later in the year. Composed of IMA, LMS, RSS, EdMS, and ORS, there were important discussions between CMS member societies and the proto-Academy team to identify objectives and support for an academy for Mathematical Sciences. As well as directly responding to the DSIT consultation, the learned societies worked closely together to provide responses via CMS.

The Learned Societies jointly exhibited at the Campaign for Mathematical Sciences' inaugural Maths Summit held at the Science Museum in March 2024 and IMA members were part of the programme committee. The event highlighted the contribution of mathematics to policy and decision-making and was well attended by policymakers.

CMS members again agreed to jointly fund the Mathematics Competition at STEM for Britain finals, March 2024 in Westminster. In late 2024 it was agreed to subsume CMS activities to the Academy for Mathematical Sciences which would establish a Forum for the Learned Societies to maintain opportunities for discussion and collaboration.

IMA 2024 representatives: Dr Martine Barons CMath FIMA (IMA Vice President – Learned Society, University of Warwick); Rosalind Azouzi (Executive Director)

ICIAM

The IMA has continued its membership and support of the International Council for Industrial and Applied Mathematics and our representatives attended board meetings throughout the year.

IMA 2024 representatives: Professor I. David Abrahams CMath FIMA (University of Cambridge) and Professor Iain Duff CMath CSci FIMA (STFC).

London Mathematical Society (LMS)

Throughout 2024 we continued to work with the LMS in many areas including research, MTTs and mathematics education. Together we award the David Crighton Medal for Services to Mathematics and the Mathematics Community, and the Christopher Zeeman Medal for Mathematics Promotion.

We held a joint event at the Royal Society in May 2024 to present the 2023 David Crighton Medal to Professor Dame Alison Etheridge DBE OBE FRS FIMA and the IMA arranged a recording of the public lecture for our YouTube channel.

As documented in the Research Committee section of this report, the sixth scientific meeting of the current IMA-LMS series, titled 'Mathematics for the Environment' took place in person in London and online in September with IMA contributions led by Dr Martine Barons CMath FIMA, VP Learned Society.

Dr Gordon Laing CMath CMathTeach FIMA (Edge Hill University) represented the IMA on the LMS TEAMAC committee which focuses on teaching of mathematics in higher education.

Science Council

The IMA is a member and licence holder of the Science Council, attending its CEO and Leaders meetings throughout the year and maintaining our Chartered Scientist licence.

SIAM

Becoming a member of SIAM/IMA chapter is free and open to any student in the final year of a BSc or MMath degree programme, Masters and PhD candidates, postdoctoral researchers, and faculty members who are engaged or interested in mathematics or scientific computing and their applications.

Other IMA members who live in the UK may receive a discounted SIAM membership fee under our reciprocity agreement. (A reciprocal arrangement exists for SIAM members who live in the US). We have joint promotional campaigns and co-operative activities with SIAM and SIAM UKIE.

There are many SIAM/IMA student chapters nationally who come together to form a society of students and faculty members who are interested in mathematics or scientific computing and their real-world applications.

Some objectives for these thriving chapters:

- To promote the application of mathematics and computational techniques to problems of interest in science and industry.
- To further fundamental research in applied mathematics and scientific computing leading to new methods and techniques useful to industry and science.
- To facilitate effective interactions between researchers and students from across the University and between University members and industry by creating a forum for the exchange of scientific ideas in an inspiring and supportive environment.

Other UK and international links

The IMA also continues to work with many organisations in Mathematics, Science, Engineering and Education. These include the European Mathematical Society (EMS), offering IMA members access to discounted subscriptions, and the Association of Teachers of Mathematics, the Mathematical Association and NANAMIC in the management of the Chartered Mathematics Teacher Registration Authority.

We also work with external organisations such as the Royal Society ACME, NCETM, and the Joint Mathematical Council to promote and support mathematics whenever possible.

The Institute's representatives over 2024:

ACME

Professor Paul Glaister CBE CMath CSci FIMA (IMA Honorary Secretary – Membership, University of Reading)

EMS

Dr Eduard Campillo-Funollet MIMA

Heads of Departments of Mathematical Sciences (HoDoMS)

Professor Michael Grove FIMA (University of Birmingham)

Joint Mathematical Council (JMC)

Professor Paul Glaister CBE CMath CSci FIMA (IMA Honorary Secretary – Membership, University of Reading)

Sigma

Professor Duncan Lawson MBE CMath FIMA (Coventry University)

ACME — Advisory Committee on Mathematics Education
 AcadMathSci – Academy for the Mathematical Sciences
 AfDSP – Alliance for Data Science Professionals
 AMSP – Advanced Mathematics Support Programme
 AI- Artificial Intelligence
 BCS – British Computing Society, the Chartered Institute for IT
 BIG – Business, Industry and Government
 CBE – Commander of the British Empire
 CMath — Chartered Mathematician
 CMS — Council for the Mathematical Sciences
 CPD – Continuing Professional Development
 DfE — Department for Education
 DSIT – Department for Science, Innovation and Technology
 ECM(s) — Early Career Mathematician(s)
 ED – Executive Director
 EdMS — Edinburgh Mathematical Society
 EPSRC — Engineering and Physical Sciences Research Council
 EMS — European Mathematical Society
 FE — Further Education
 FRS – Fellow of the Royal Society
 HE – Higher Education
 HEC – Higher Education Committee
 HEIs — Higher Education Institutions
 HoDoMS — Heads of Departments of Mathematical Sciences
 ICIAM – International Council for Industrial and Applied Mathematics
 IF – Impact Factor
 IMA — Institute of Mathematics and its Applications
 INI — Isaac Newton Institute for Mathematical Sciences
 KE – Knowledge Exchange
 KS2 – Key Stage 2
 KS3 – Key Stage 3
 LMS — London Mathematical Society
 MA — The Mathematical Association
 MEI — Mathematics in Education and Industry
 ML – Machine Learning
 NANAMIC — National Association of Numeracy and Mathematics in Colleges
 NCETM — National Centre for Excellence in the Teaching of Mathematics
 OBE – Order of the British Empire
 OR – Operational Research
 ORS — Operational Research Society
 OU – Open University
 OUP — Oxford University Press
 PAC – Professional Affairs Committee
 QAA – The Quality Assurance Agency for Higher Education
 RSS – Royal Statistical Society
 S&FE — Schools and Further Education
 SIAM — Society for Industrial and Applied Mathematics
 SIAM UKIE — UK and Republic of Ireland Section of SIAM
 STEM — Science, Technology, Engineering and Mathematics
 STFC – Science and Technology Facilities Council
 UKRI – UK Research and Innovation